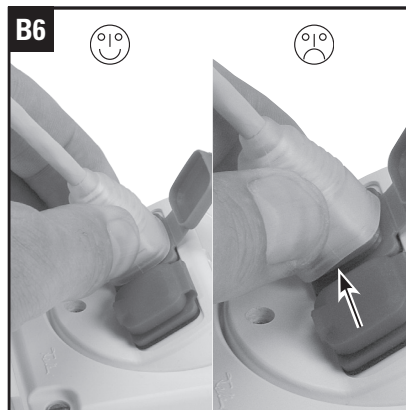
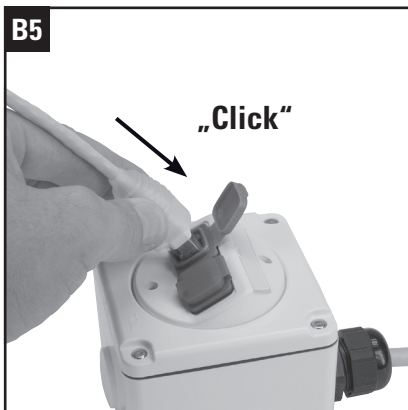
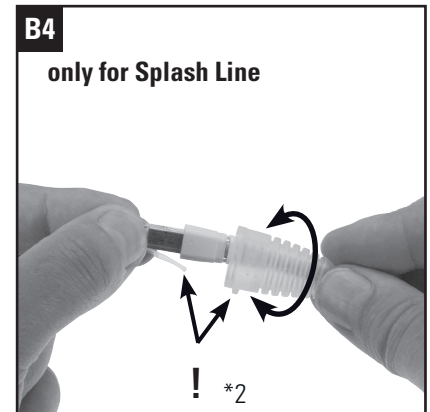
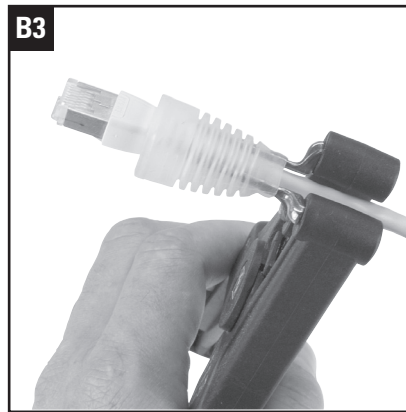
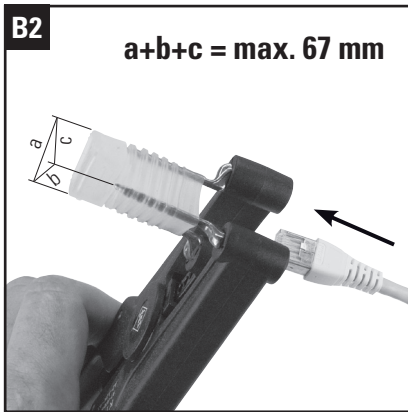
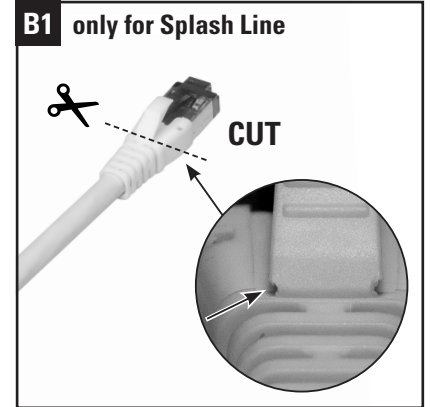
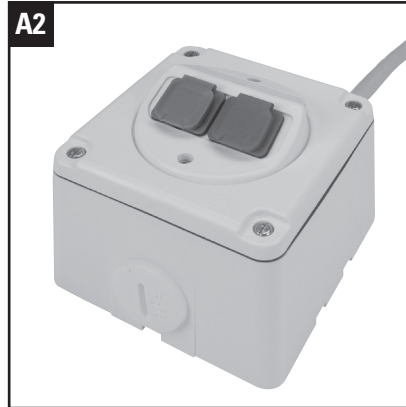
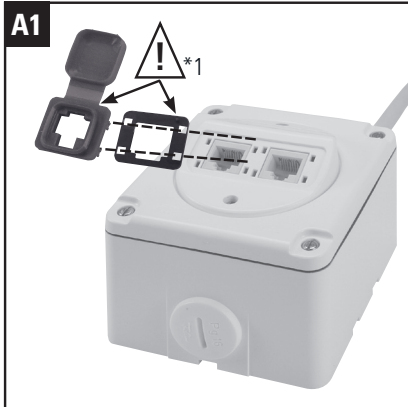


Installation guide Splash Line / Universal Splash

Installationsanleitung Splash Line / Universal Splash
Instructions de montage Splash Line / Universal Splash



*1) Auf die richtige Montageposition der Dichtung achten (Positionsnocken)
Make sure seal is in the correct position (note positioning knob)
Attention à monter correctement le joint d'étanchéité (liseret de positionnement)

*2) Den Nocken der Splash Tülle und die Entriegelungs-Klinke auf gleiche Seite richten
Ensure that the latch on the plug is on the same side as the positioning ridge on the Splash Sleeve
Positionner le levier du plug et l'ergot du manchon Splash Sleeve du même côté

Headquarters

Switzerland

Reichle & De-Massari AG
Binzstrasse 32
CHE-8620 Wetzikon
Telephone HQ +41 (0)44 933 81 11
Telefax HQ +41 (0)44 930 49 41
E-Mail hq@rdm.com

www.rdm.com

R&M