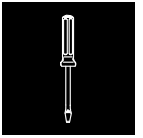
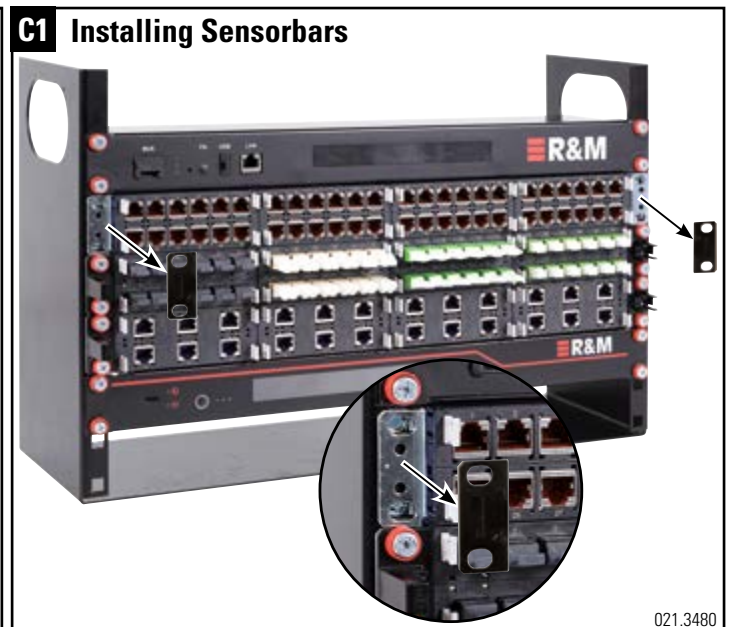
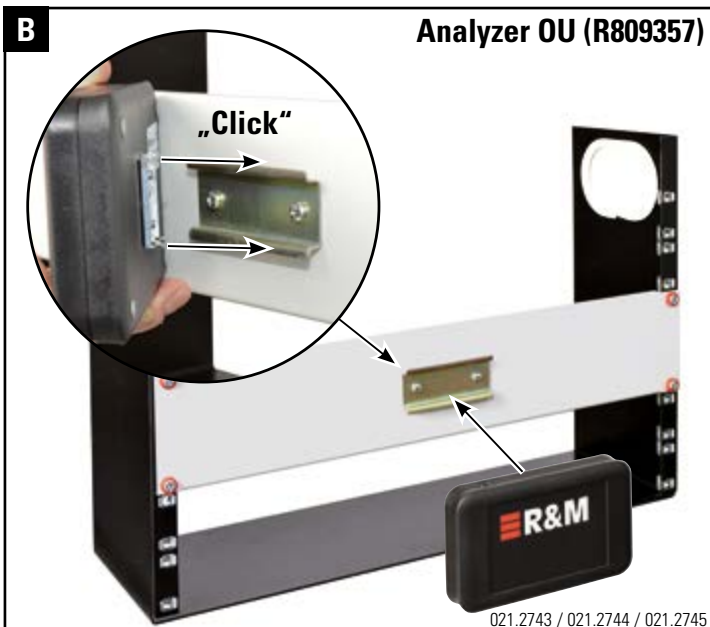
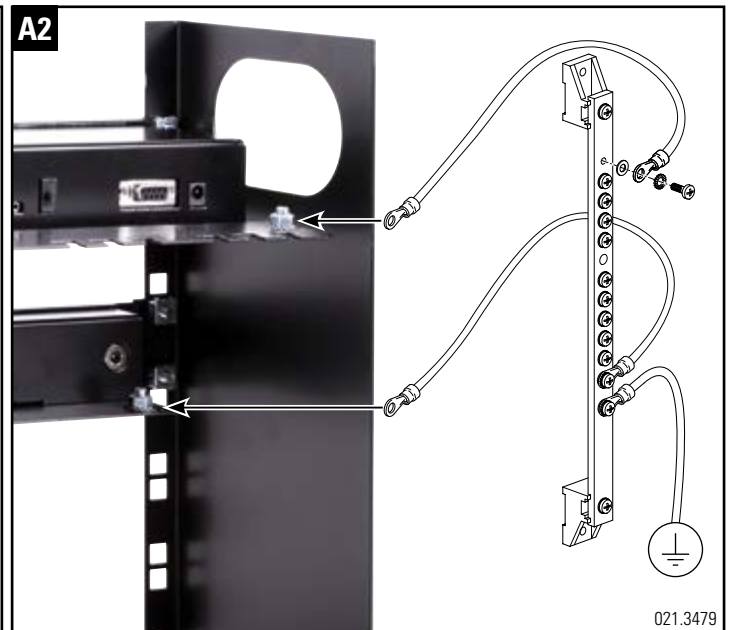
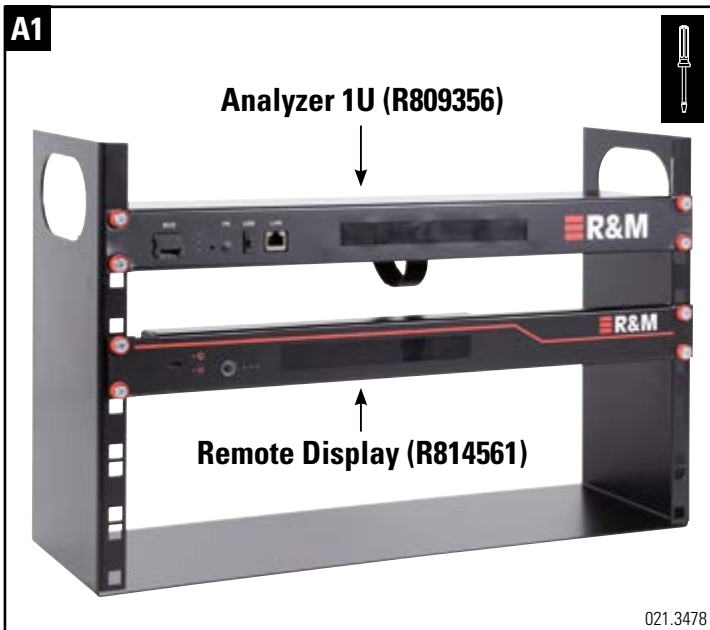
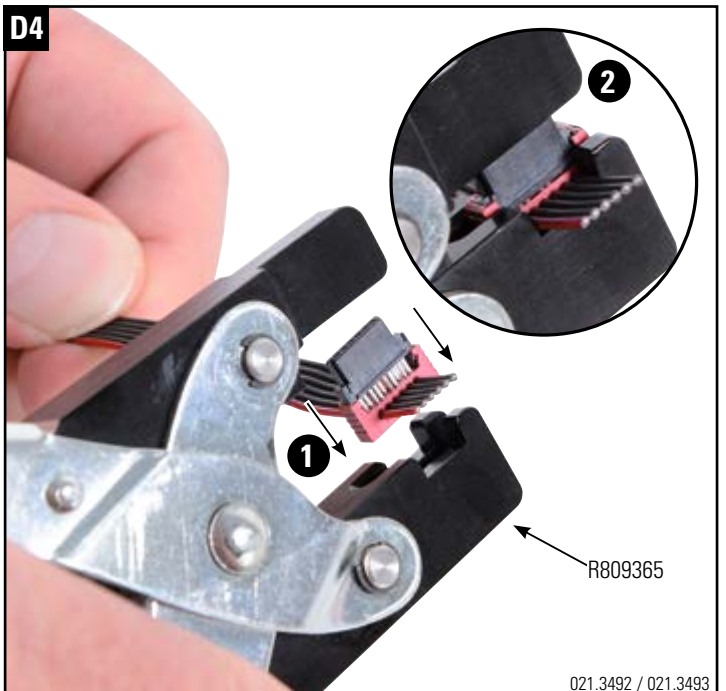
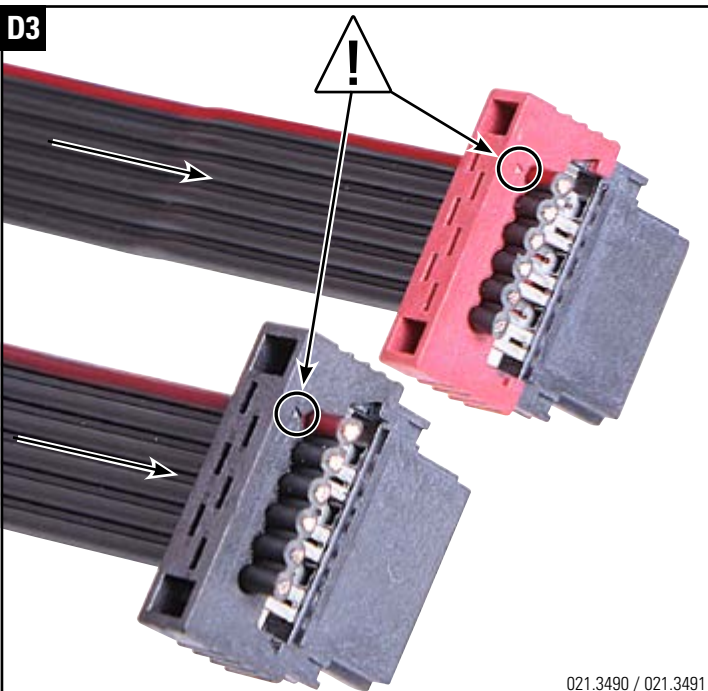
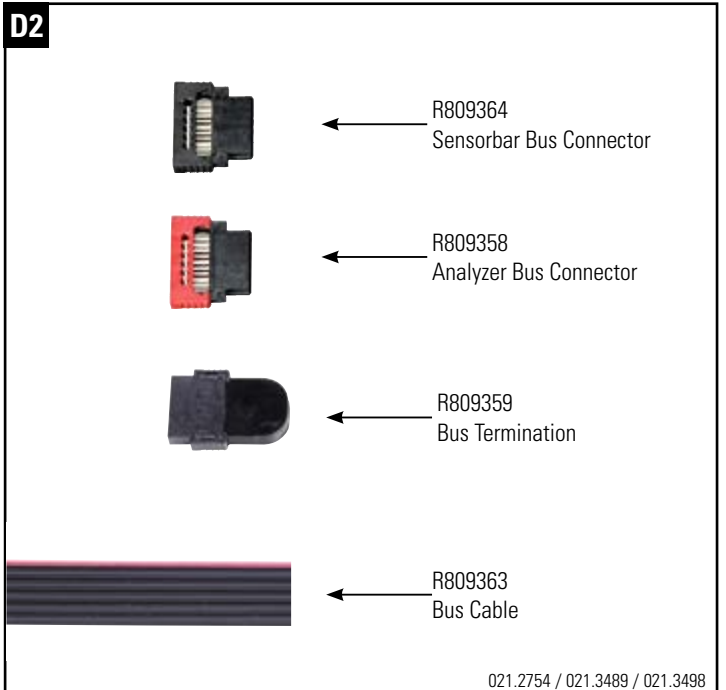
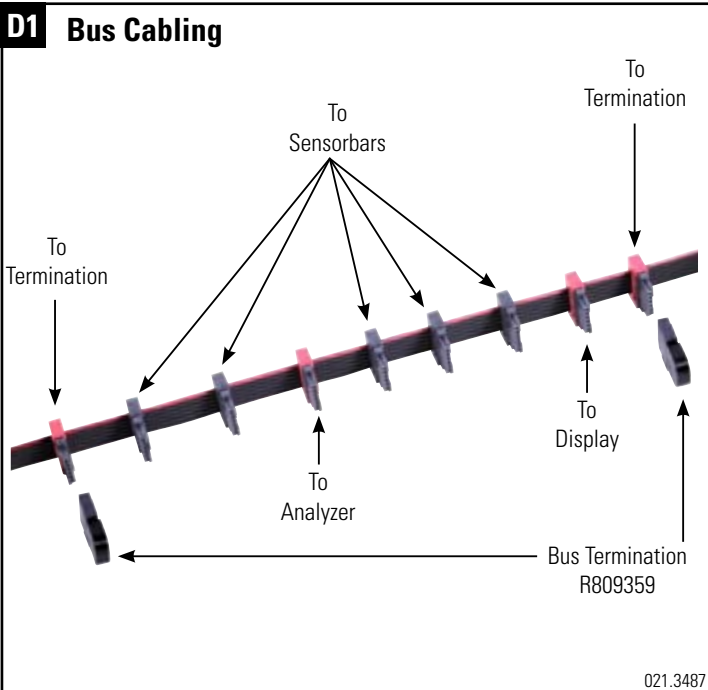
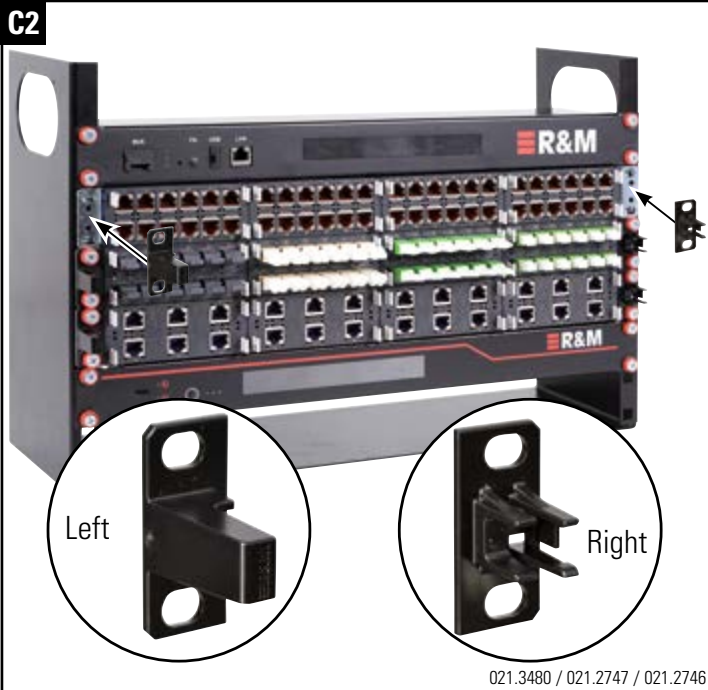


# Installation guide R&MinteliPhy

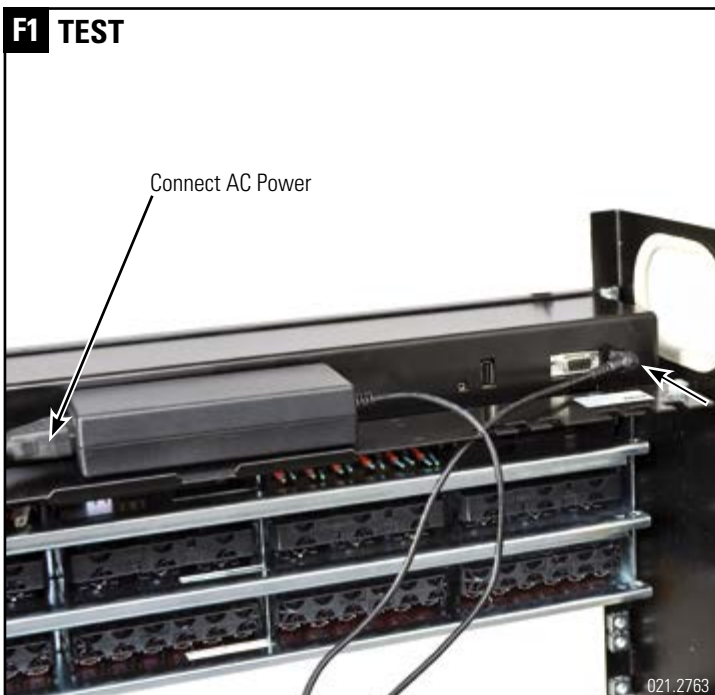


021.3477

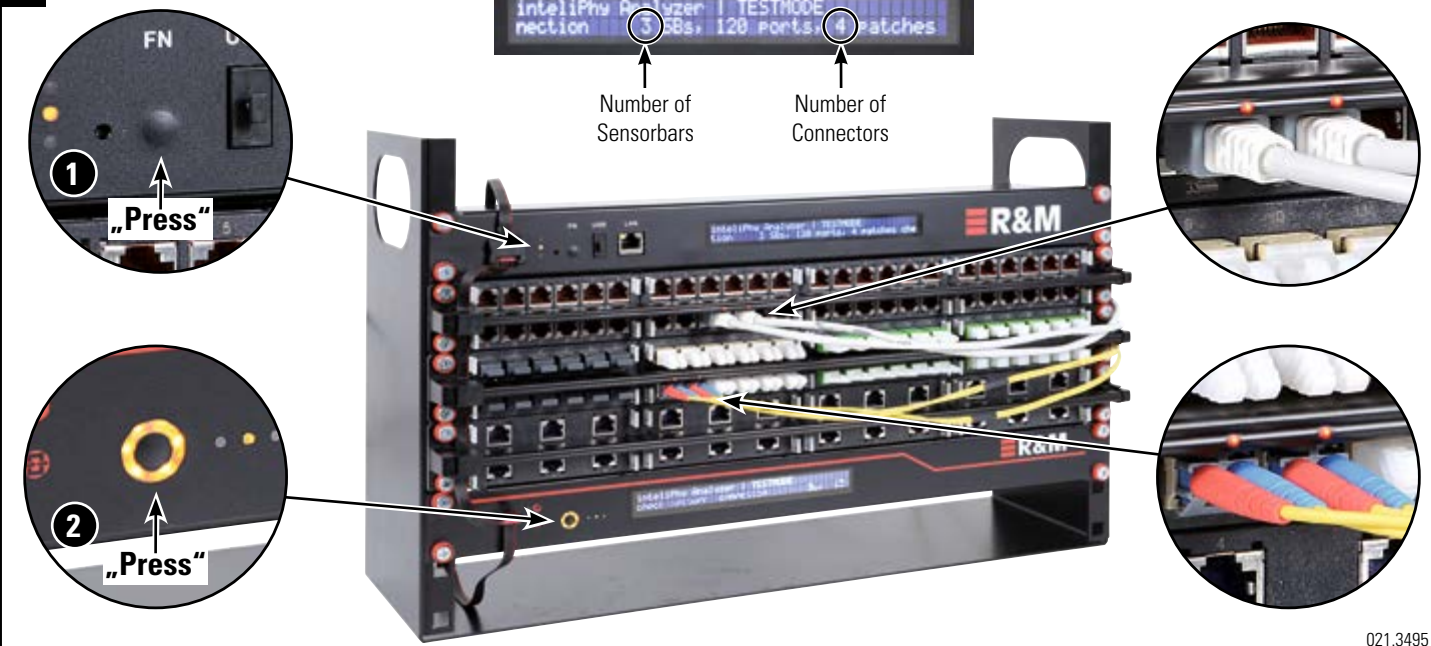






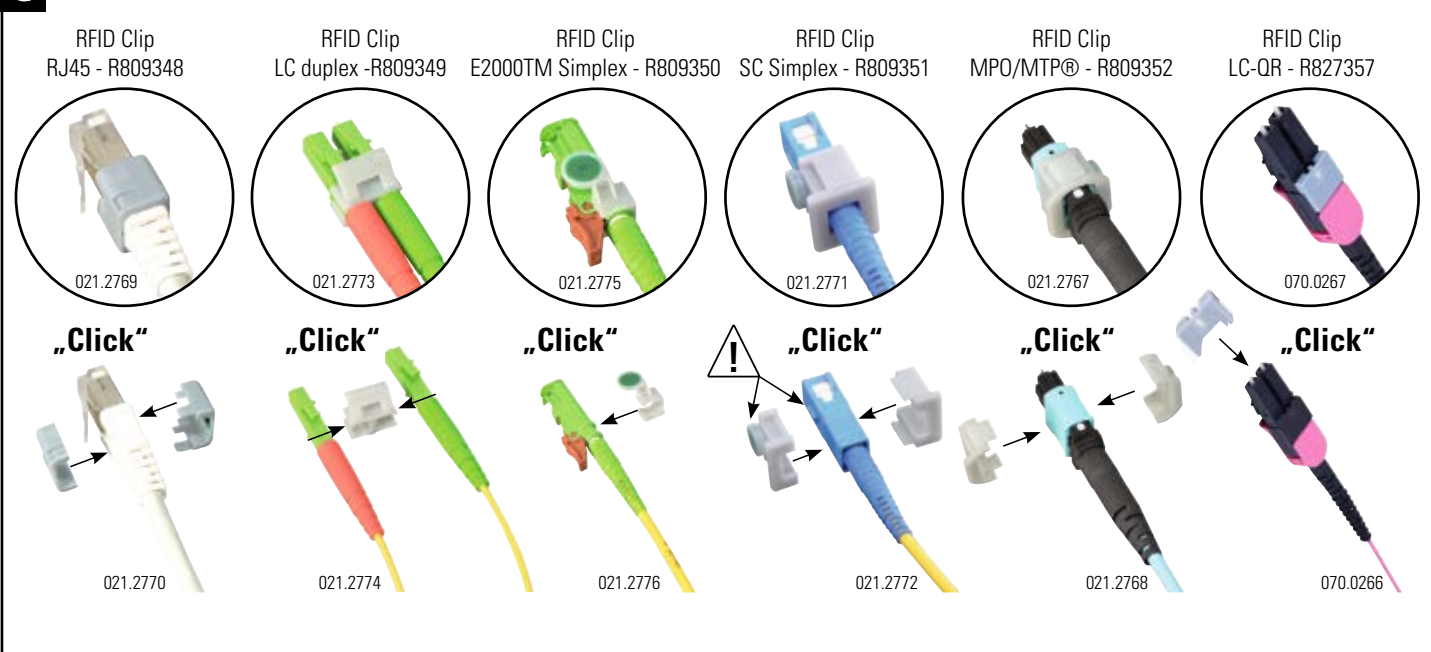


# F1 TESTMODE

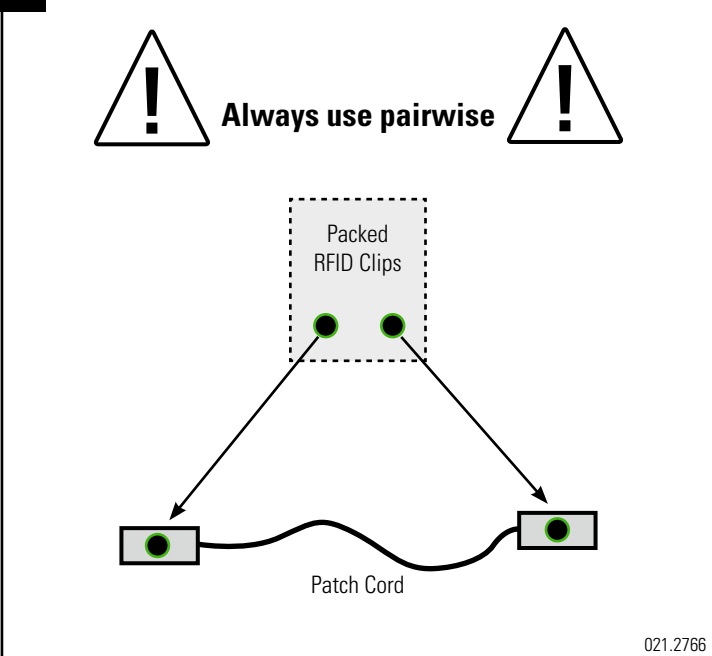


021.3495

# G



# H



021.2766

### NOTICE (only applies to 837017):

This device complies with Part 15 of the FCC Rules. Operation is subject to the following two conditions:

- this device may not cause harmful interference, and
- this device must accept any interference received, including interference that may cause undesired operation.

Changes or modifications made to this equipment not expressly approved by Reichle & De-Massari AG may void the FCC authorization to operate this equipment.

### Headquarters

**Switzerland**  
 Reichle & De-Massari AG  
 Binzstrasse 32  
 CHE-8620 Wetzikon  
 Telephone HQ +41 44 933 81 11  
 Telefax HQ +41 44 930 49 41  
 E-Mail hq@rdm.com

[www.rdm.com](http://www.rdm.com)

