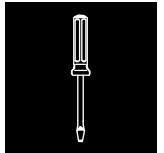


Installationsanleitung Anschlussmodul Kat.6_A EL

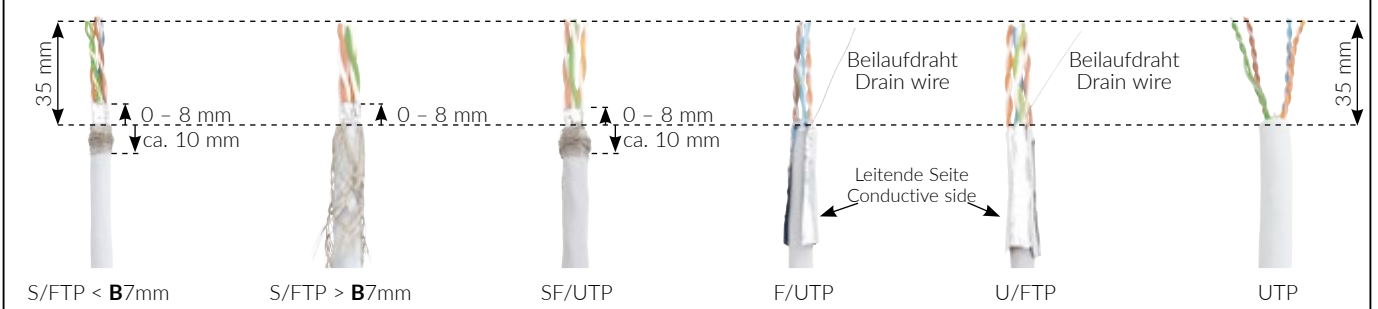
Installation guide Connection Module Cat.6_A EL

Instructions de montage Module de raccordement Cat.6_A EL



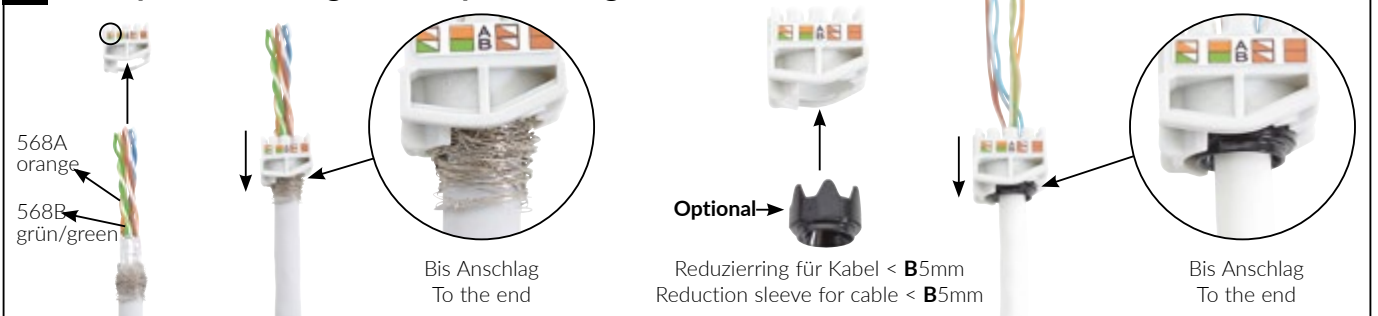
A Kabelvorbereitung / Cable preparation

021.3071 - 021.3076



B Kabelpositionierung / Cable positioning

021.3077 - 021.3080



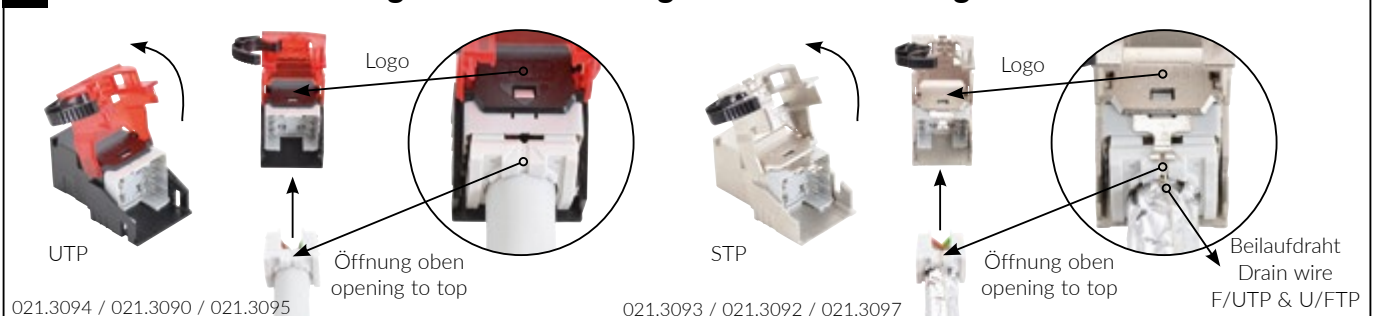
C1 Adern nach Farbcode einlegen / Insert wires according to color code



C2 Adern schneiden / Cutting wires



D Modul- und Beschaltungsblock Ausrichtung / Module and wiring block orientation

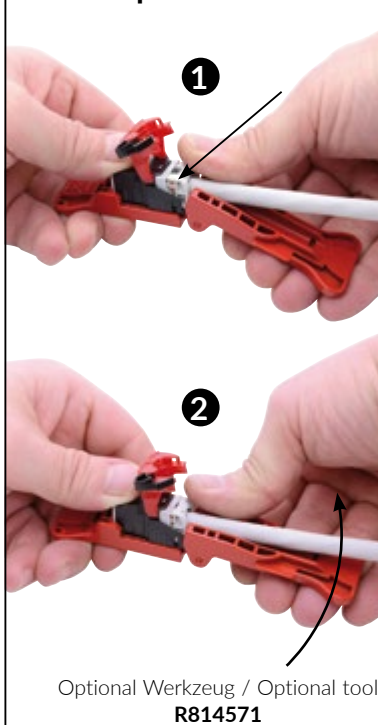


E1 Beschaltung UPT / Wiring UTP

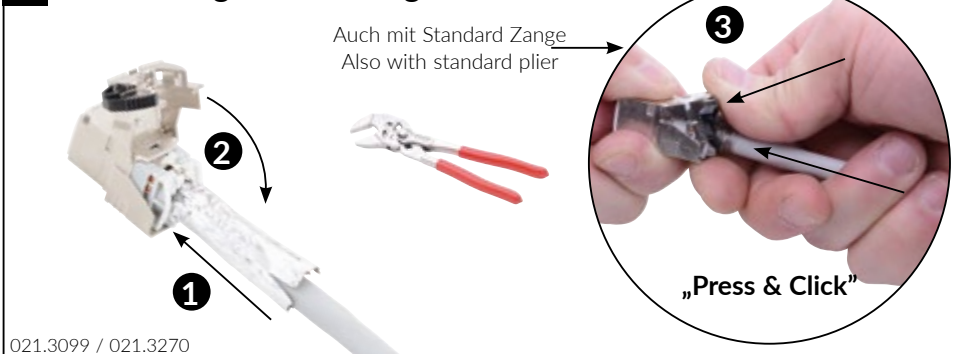


021.3098 / 021.3271

F Optional Werkzeug Optional tool



E2 Beschaltung STP / Wiring STP



021.3099 / 021.3270

G1 Zugentlastung & Schirmabnahme / Strain relief & earthing



021.3102 / 021.3105

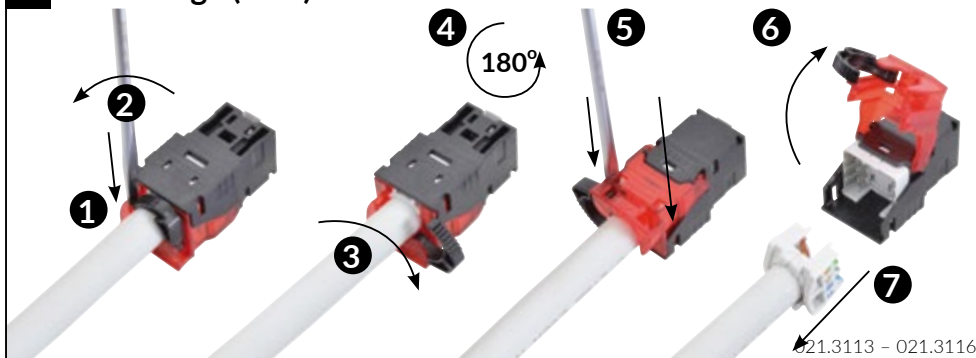
021.3103 / 021.3104

021.3085 / 021.3104 / 021.3117

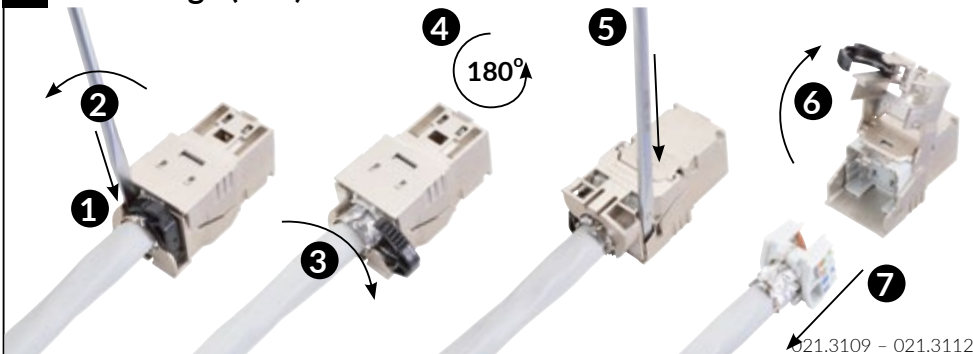
G2 * Optional Werkzeug * Optional tool



H1 Demontage (UTP)



H2 Demontage (STP)



Headquarters

Switzerland

Reichle & De-Massari AG
Binzstrasse 32
CHE-8620 Wetzikon
Telephone HQ +41 (0)44 933 81 11
Telefax HQ +41 (0)44 930 49 41
E-Mail hq@rdm.com

www.rdm.com



813796/E/07.2020

Please note:

This guide shows the best practices for installation **ONLY**. R&M expressly disclaims all liability for any damage to material, equipment, and for any injury or death. Legal health and safety regulations should have priority over best practices as shown in this guide. R&M does not guarantee this guide to be free of errors. Products included may vary from products shown. Please exercise caution.