

Installationsanleitung Kat.6<sub>A</sub> EL 90° Adapter, geschirmt  
 Installation guide Cat.6<sub>A</sub> EL 90° adapter, shielded  
 Instructions de montage adaptateur Cat.6<sub>A</sub> EL 90°, blindé



**R824374**  
 Separat erhältlich  
 Separately available

021.3891

**A** **Kabelvorbereitung / Cable preparation**

35 mm  
 0 – 8 mm  
 ca. 10 mm  
 S/FTP SF/UTP F/UTP U/FTP

**B**

⚠  
 Modul-Aufschaltung gemäß  
 Installationsanleitung  
 Module termination according  
 to the installation guide

021.3897

**C**

021.3897

**D**

90°

021.3908

**E**

021.3909

**F**

021.3910

**G**

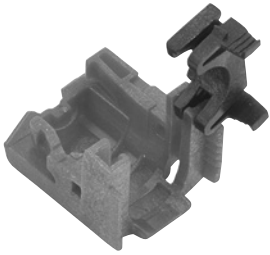
021.3911

**H**

«press»


021.3913 / 021.3912

Installationsanleitung Kat.6<sub>A</sub> EL 90° Adapter, ungeschirmt  
 Installation guide Cat.6<sub>A</sub> EL 90° adapter, unshielded  
 Instructions de montage adaptateur Cat.6<sub>A</sub> EL 90°, non-blindé



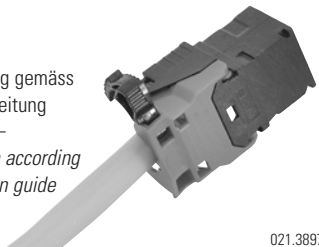
021.3891

**A**



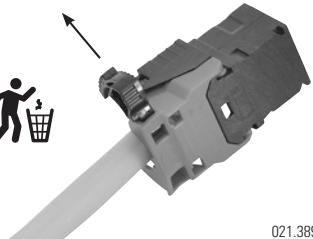
Modul-Aufschaltung gemäss  
Installationsanleitung

Module termination according  
to the installation guide



021.3897

**B**



021.3897

**C**

90°

021.3908

**D**

021.3909

**E**

021.3910

**F**

021.3911

**G**

«press»

021.3913 / 021.3912

**Demontage u/s**

«press»

1 2 3 4

021.3912 021.3914 021.3915

**Headquarters**

**Switzerland**

Reichle & De-Massari AG  
 Binzstrasse 32  
 CHE-8620 Wetzikon  
 Telephone HQ +41 (0)44 933 81 11  
 Telefax HQ +41 (0)44 930 49 41  
 E-Mail [hq@rdm.com](mailto:hq@rdm.com)

[www.rdm.com](http://www.rdm.com)

