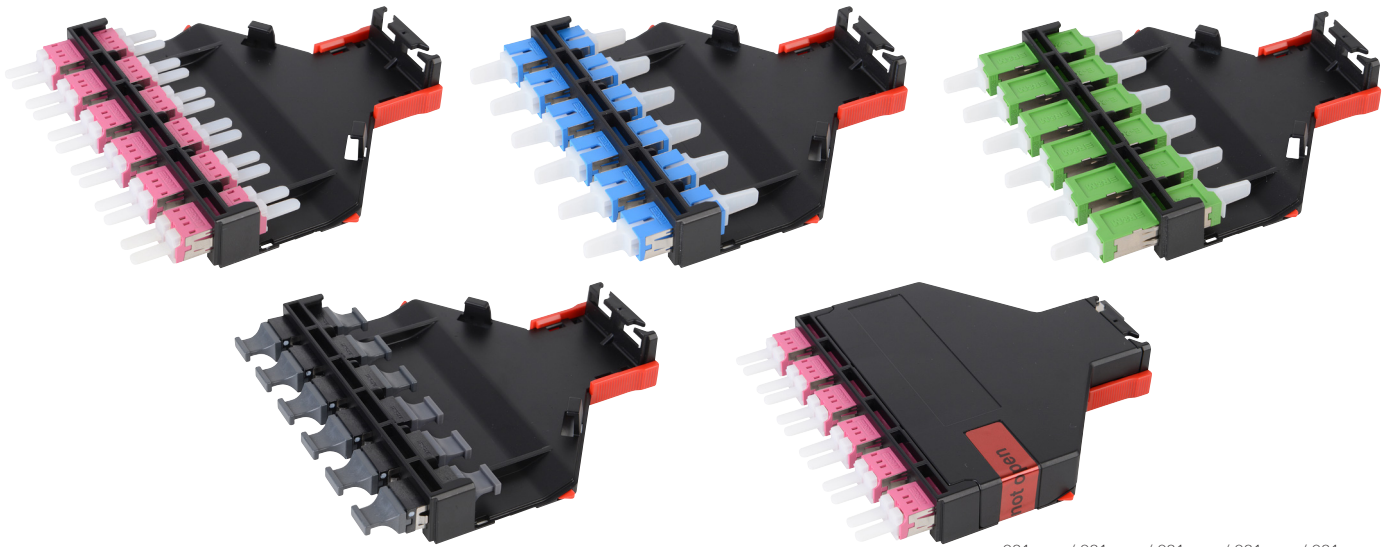


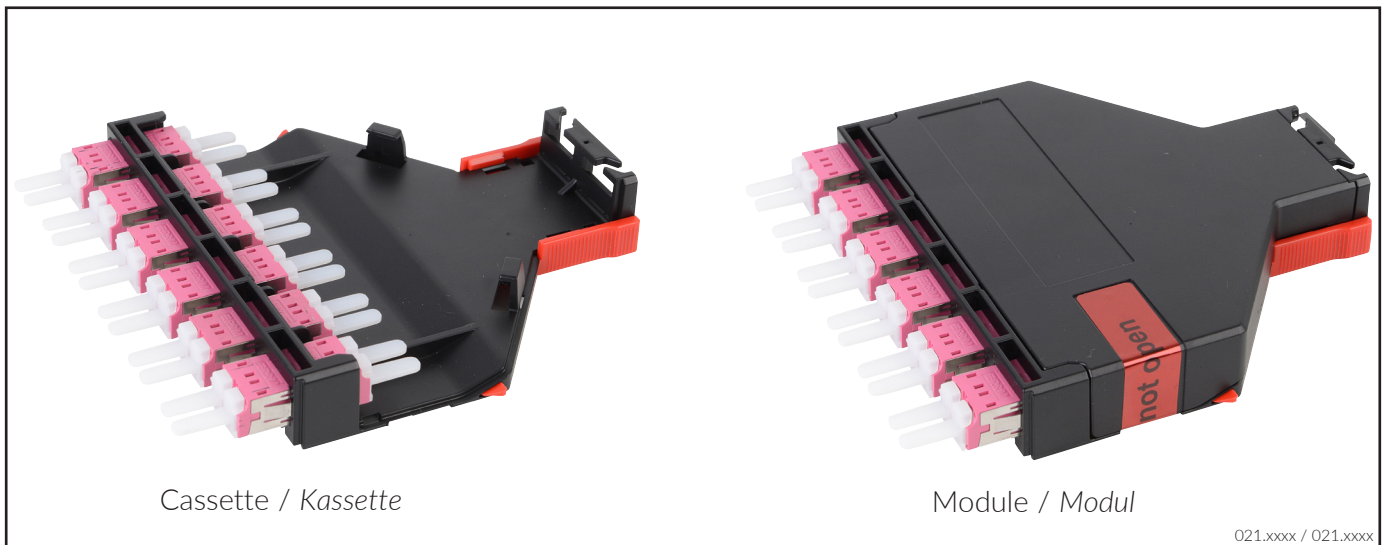
Installationsanleitung Netscale 48 FO Kasette und Modul

Installation guide Netscale 48 FO Cassette and Module



021.xxxx / 021.xxxx / 021.xxxx / 021.xxxx / 021.xxxx

A - Scope of delivery / Lieferumfang



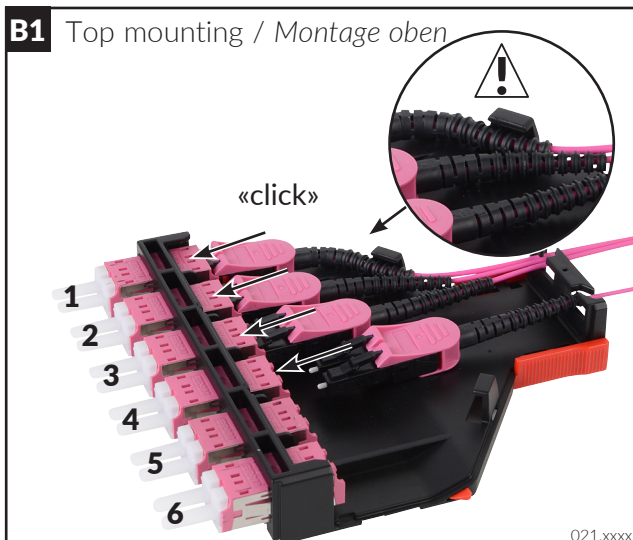
Cassette / Kasette

Module / Modul

021.xxxx / 021.xxxx

B - Cassette preparation / Kasette vorbereiten

B1 Top mounting / Montage oben



021.xxxx

B2 Bottom mounting / Montage unten



021.xxxx

C - Module preparation / Modul vorbereiten

C1



021.xxxx

C2

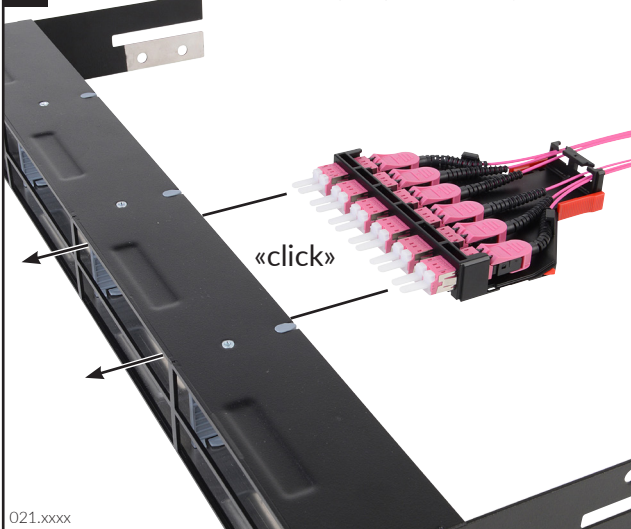


021.xxxx

D - Mounting in Panel / Montage im Rangierfeld

D1

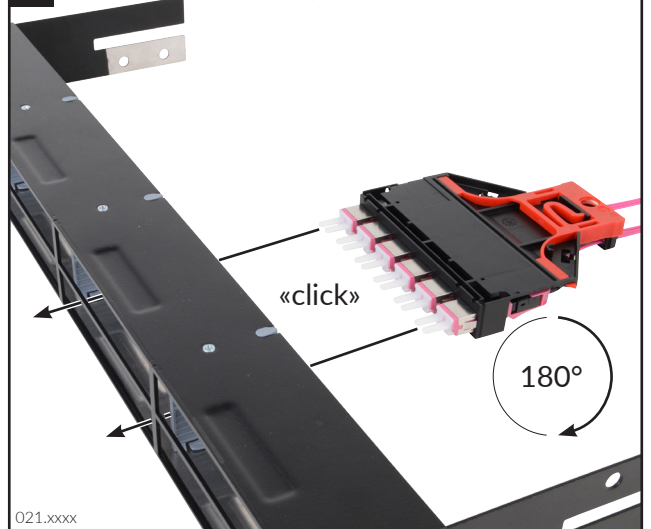
Mounting top / Montage oben



021.xxxx

D2

Mounting bottom / Montage unten



021.xxxx

E - Remove / Entfernen

E1



021.xxxx

Headquarters

Switzerland

Reichle & De-Massari AG

Binzstrasse 32

CHE-8620 Wetzikon

Telephone HQ +41 (0)44 933 81 11

Telefax HQ +41 (0)44 930 49 41

E-Mail hq@rdm.com

www.rdm.com

R&M

Please note:

This guide shows the best practices for installation **ONLY**. R&M expressly disclaims all liability for any damage to material, equipment, and for any injury or death. Legal health and safety regulations should have priority over best practices as shown in this guide. R&M does not guarantee this guide to be free of errors. Products included may vary from products shown. Please exercise caution.