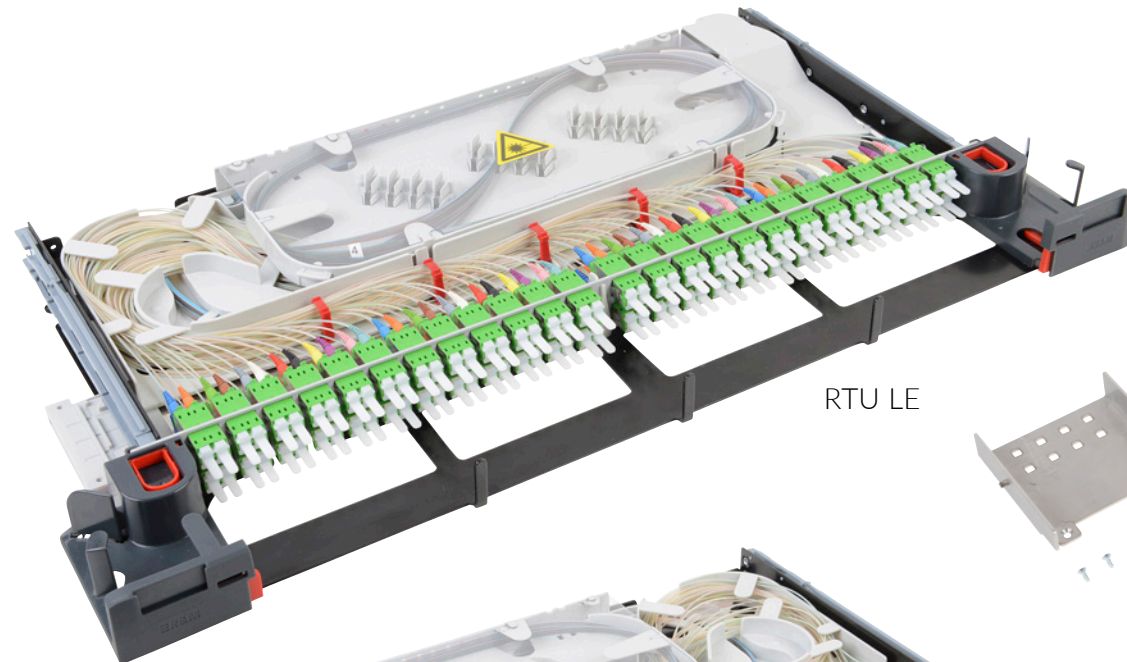
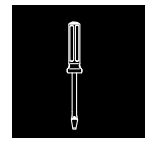




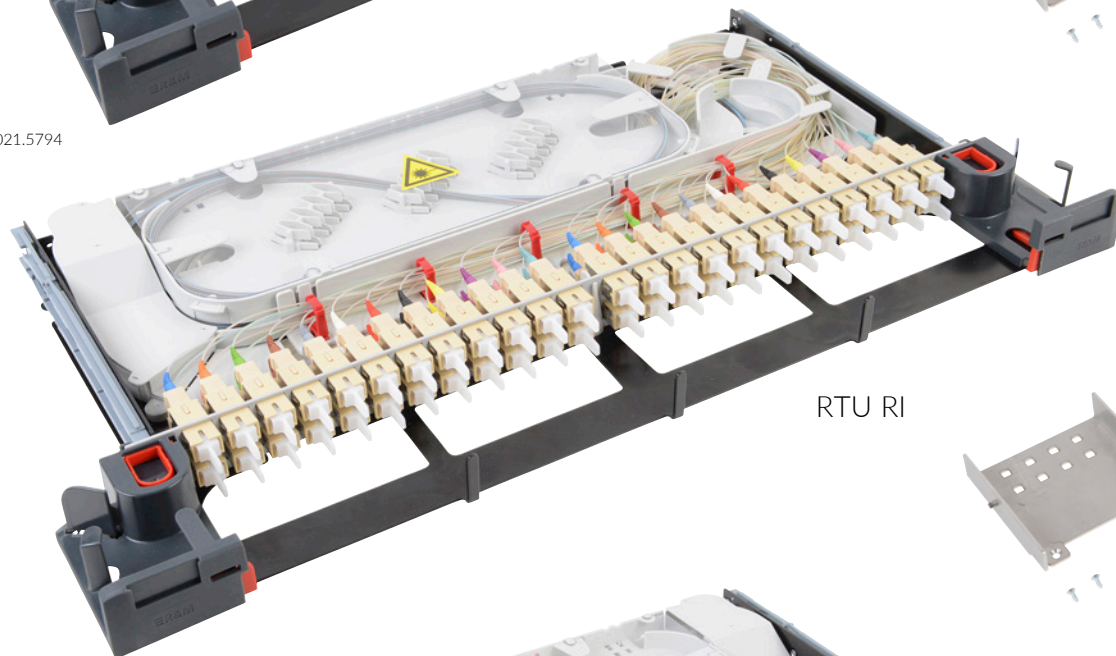
Installationsanleitung PRIME 3/4HE RTU und RSU
Installation guide PRIME 3/4U RTU and RSU
Instructions de montage PRIME 3/4U RTU et RSU



RTU LE

021.5799

021.5794



RTU RI

021.5799

021.5792



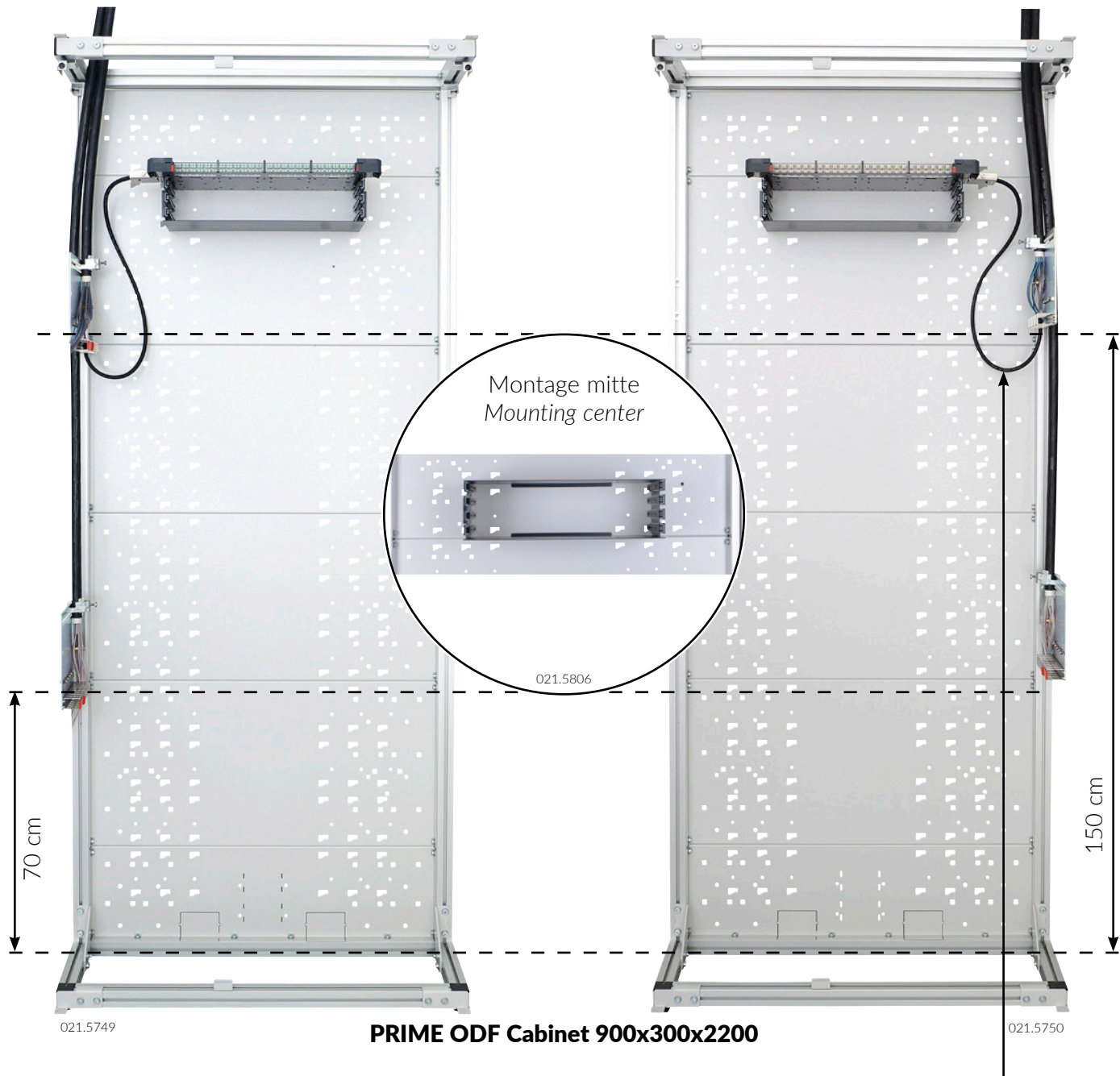
RSU BA

021.5798

021.5791



A - Montage im ETSI Gestell / Mounting in ETSI cabinet



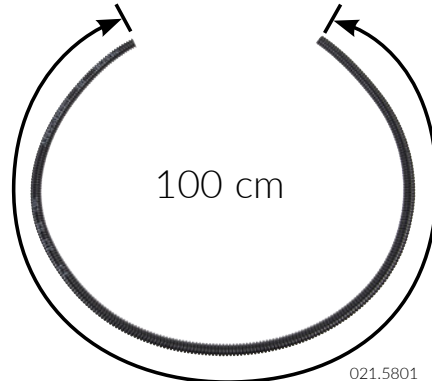
Kabeleingang von oben
Cable entrance from the top



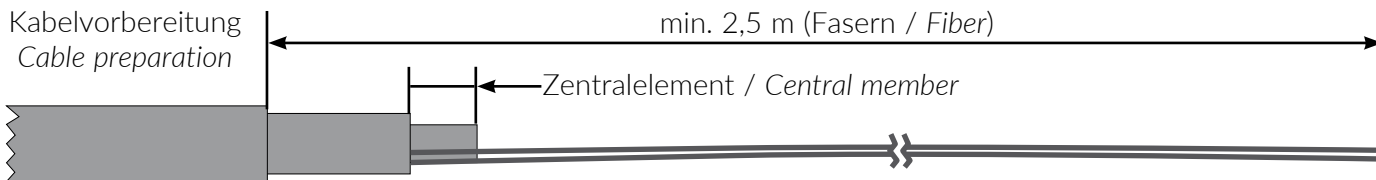
Kabeleingang von unten
Cable entrance from the bottom



Kabelführungsset NW7
Cable guide kit NW7

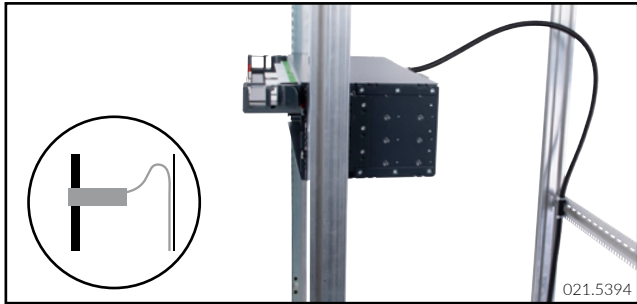
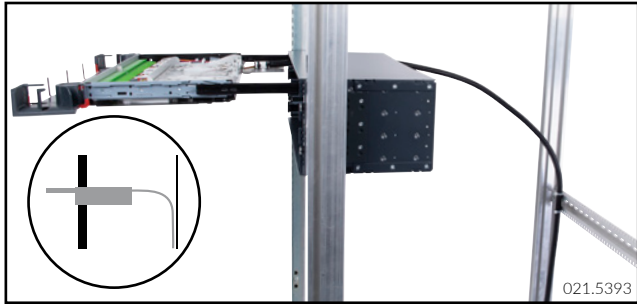


Kabelvorbereitung
Cable preparation

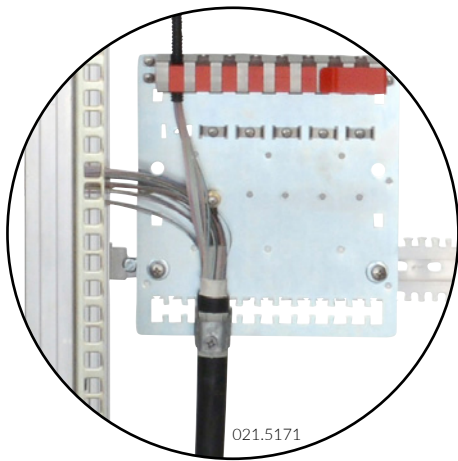




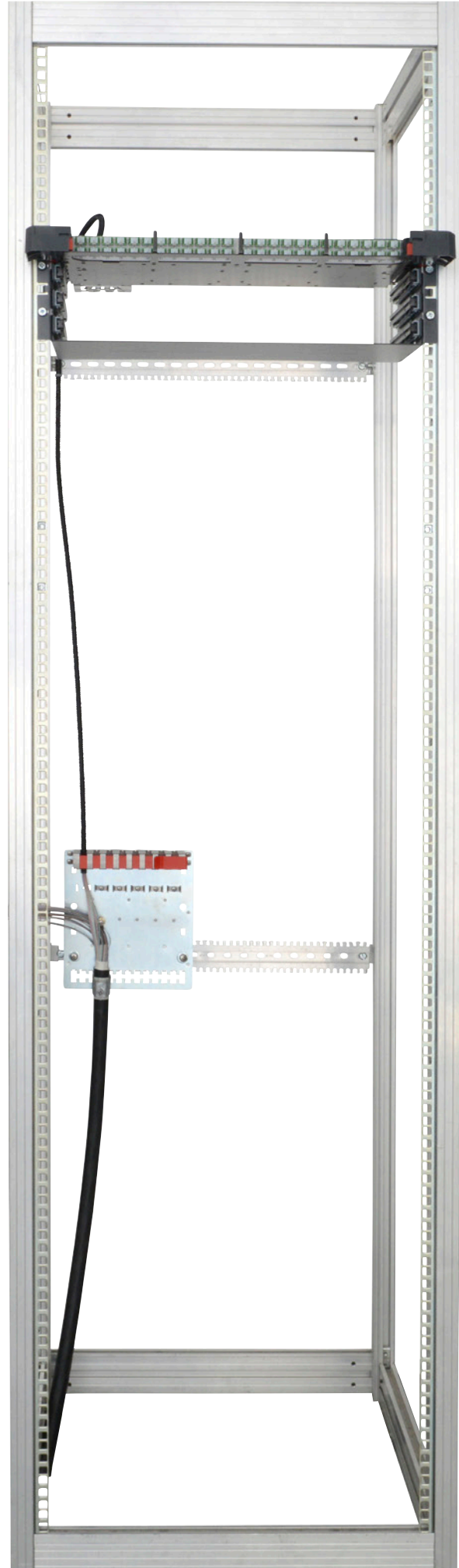
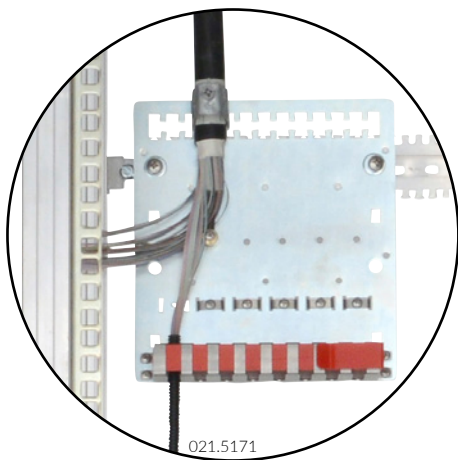
B - Montage im 19" Schrank mit frontseitiger Befestigung / Mounting in 19" rack with front rail fixation



Kabeleingang von unten
Cable entrance from the bottom



Kabeleingang von oben
Cable entrance from the top

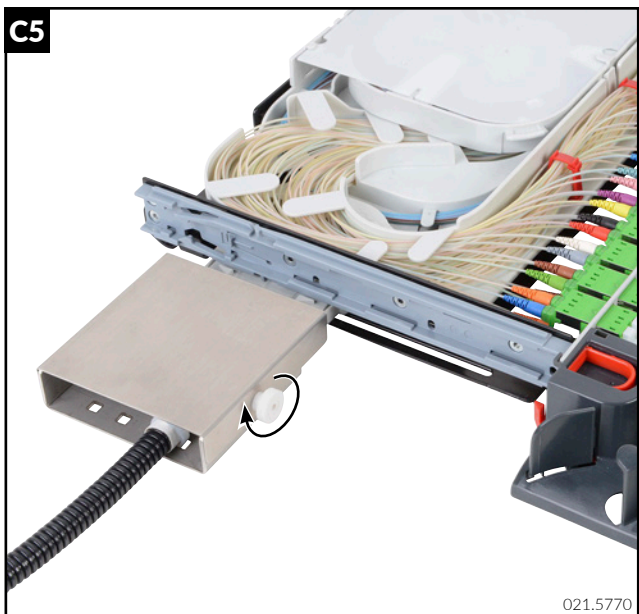
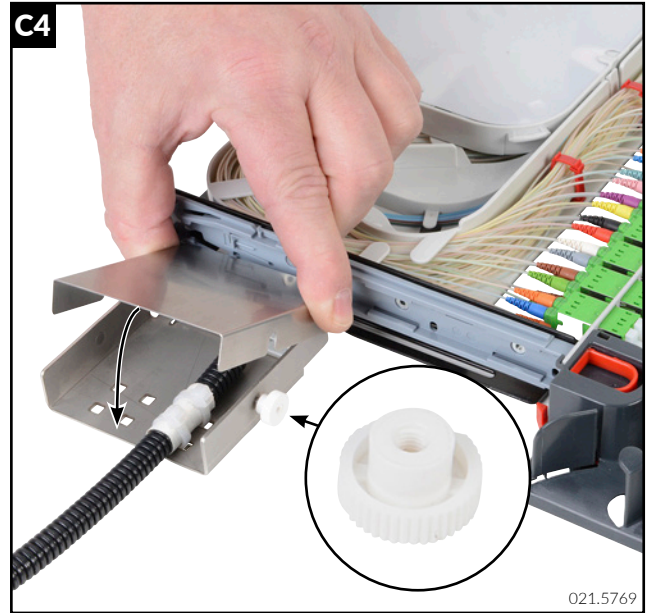
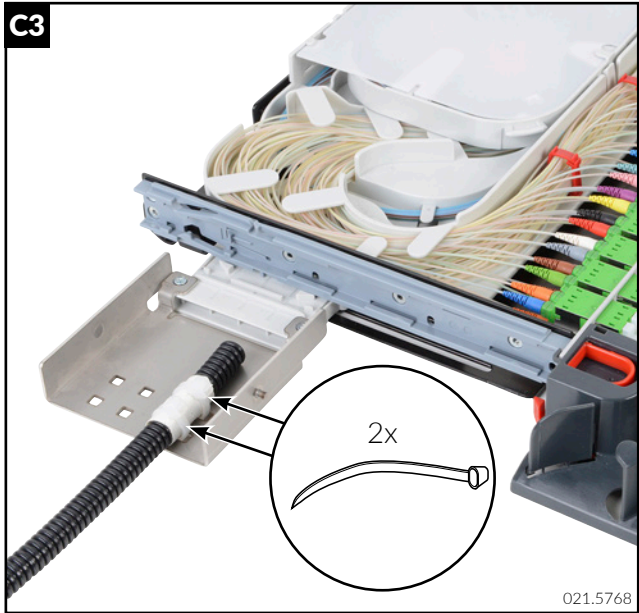
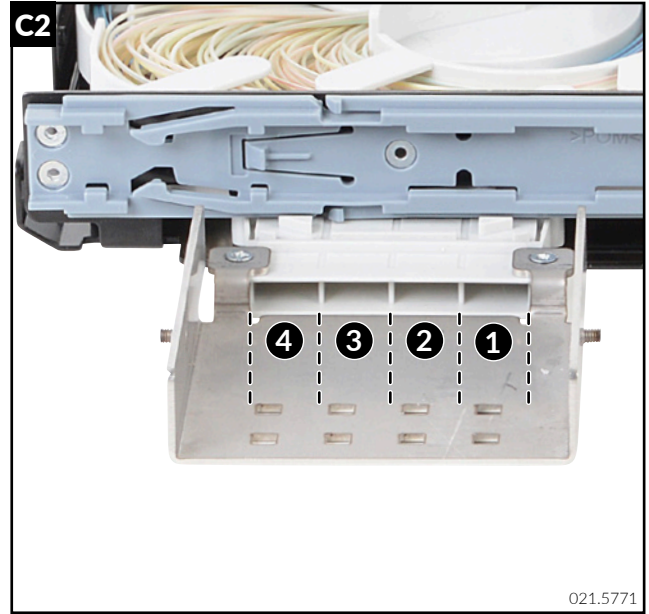
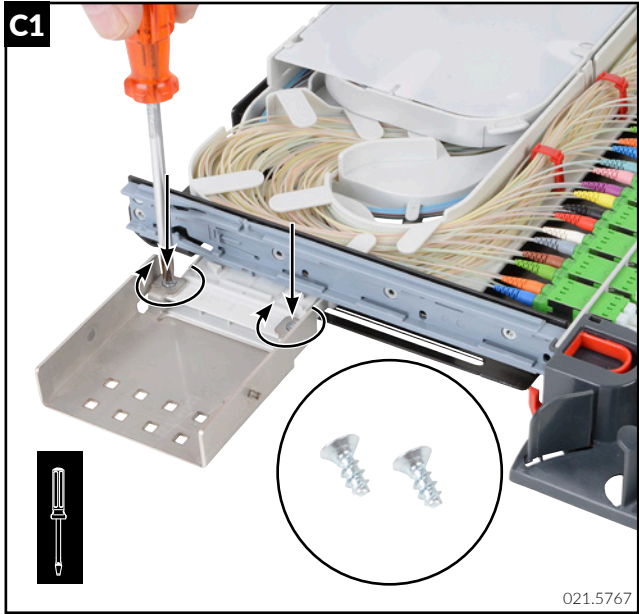


021.5171



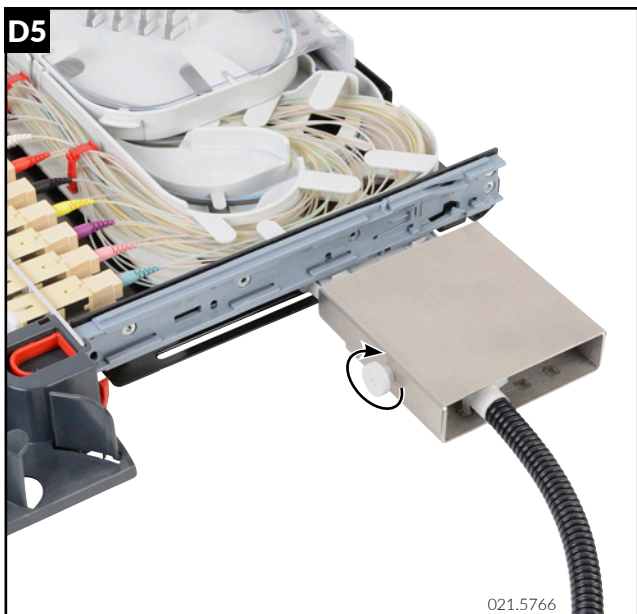
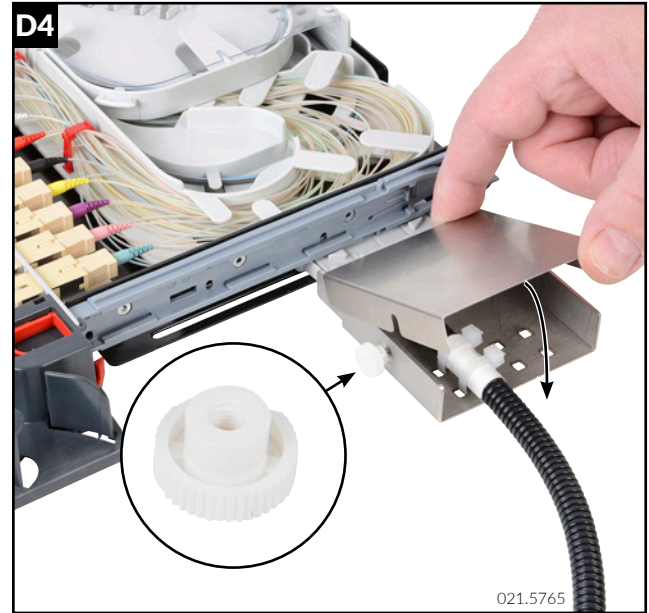
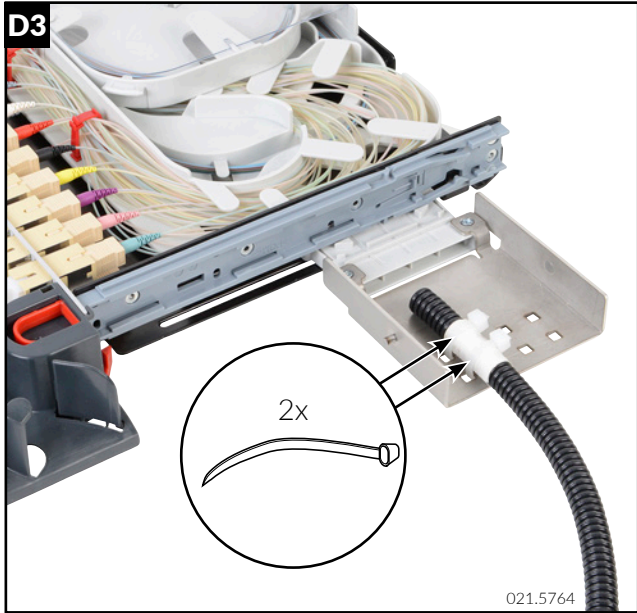
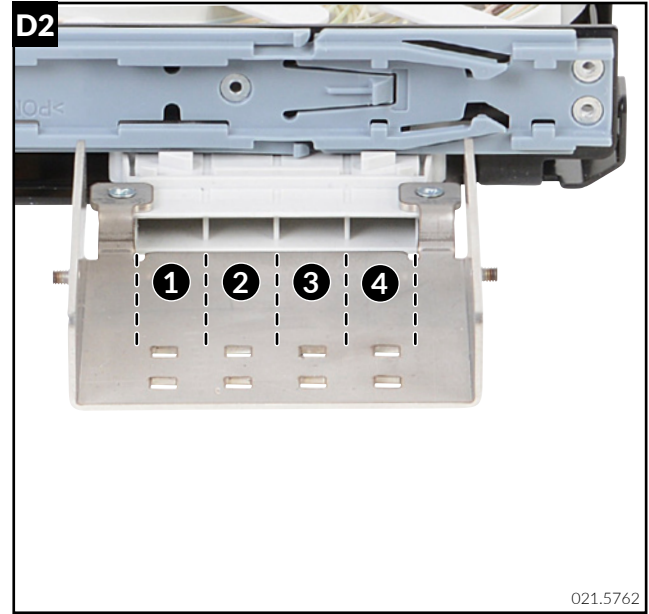
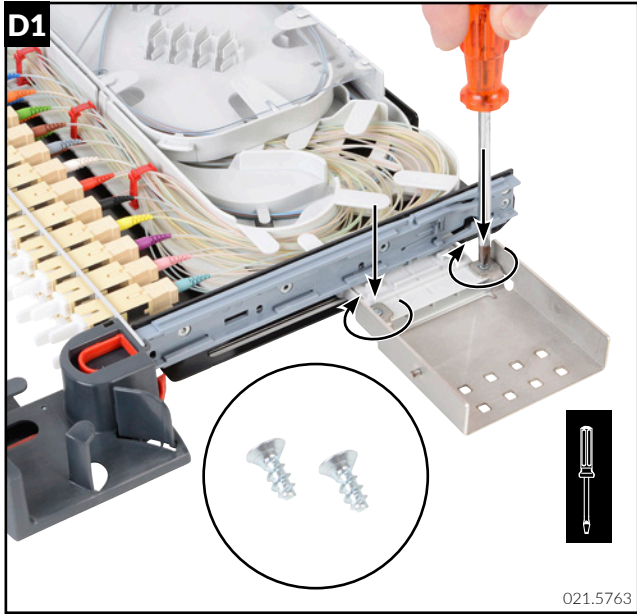


C - Vorbereitung PRIME RTU/RSU LE / Preparation PRIME RTU/RSU LE

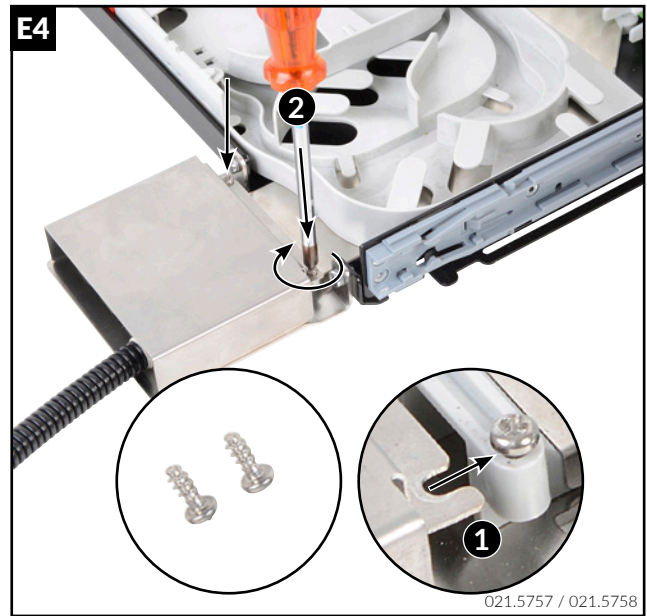
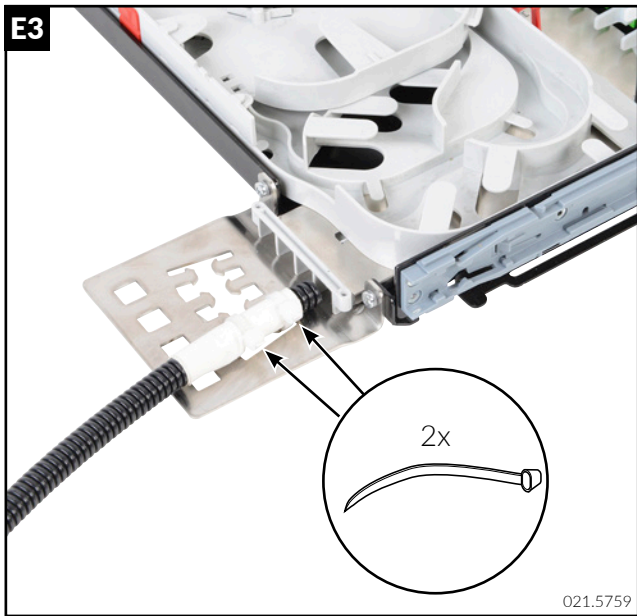
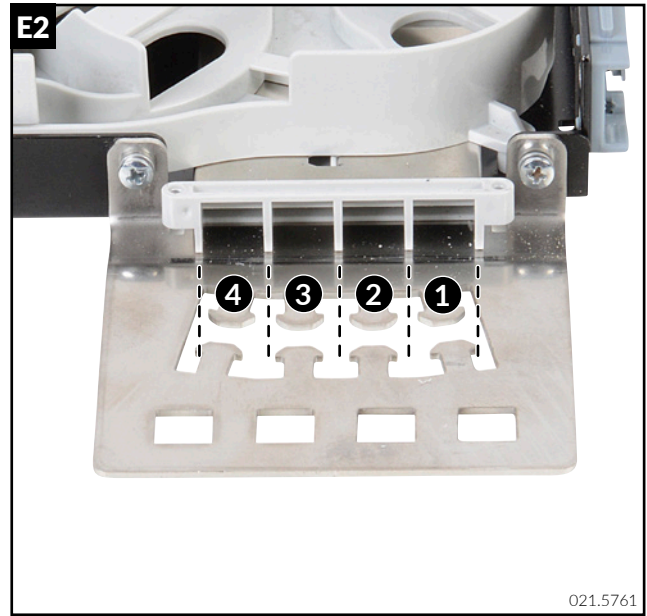




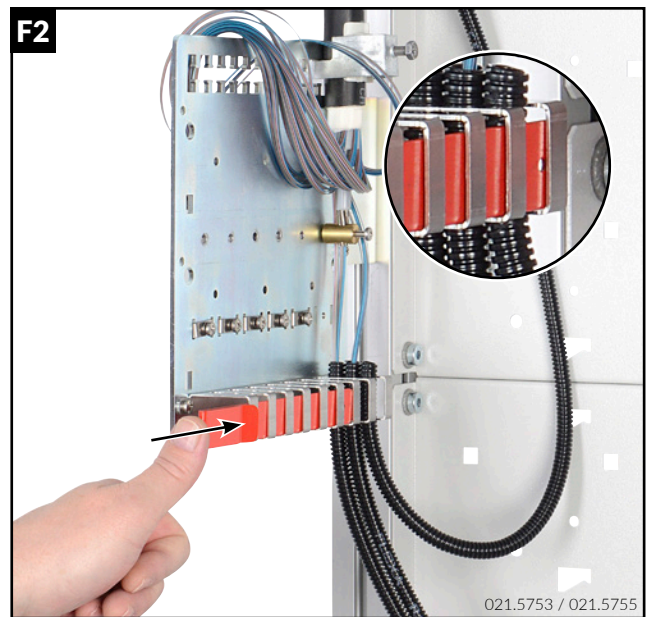
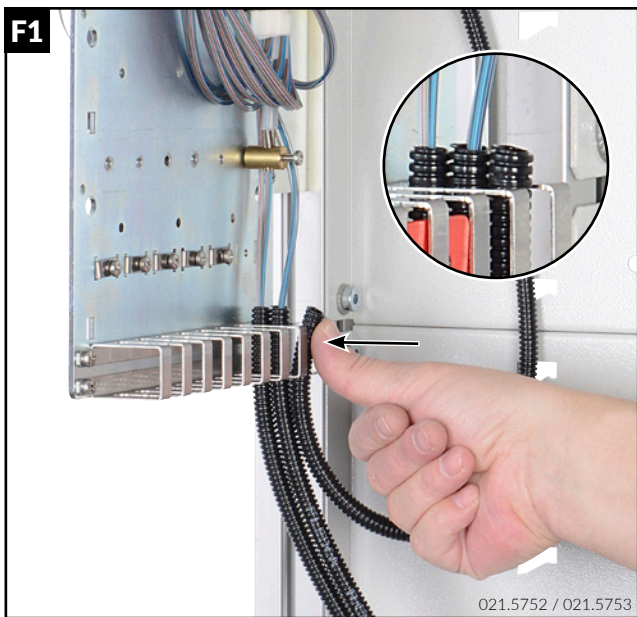
D - Vorbereitung PRIME RTU/RSU RI / Preparation PRIME RTU/RSU RI



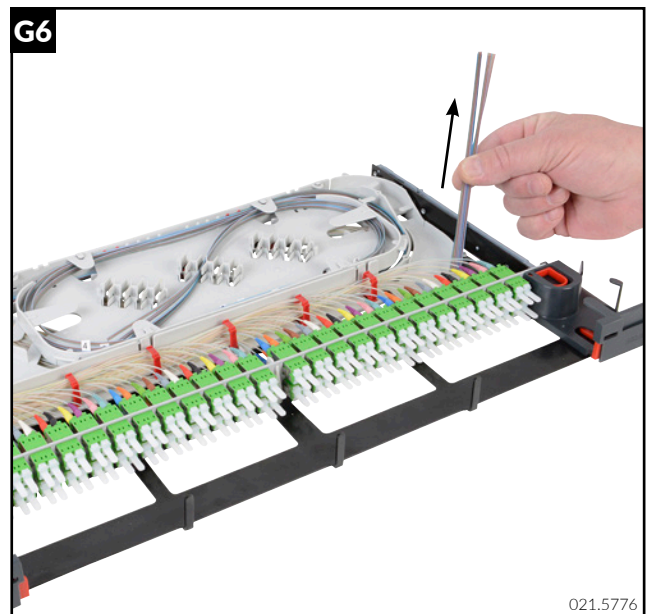
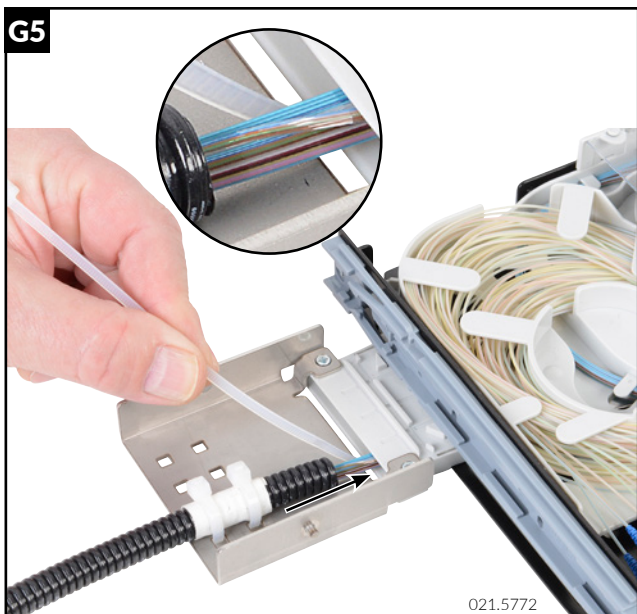
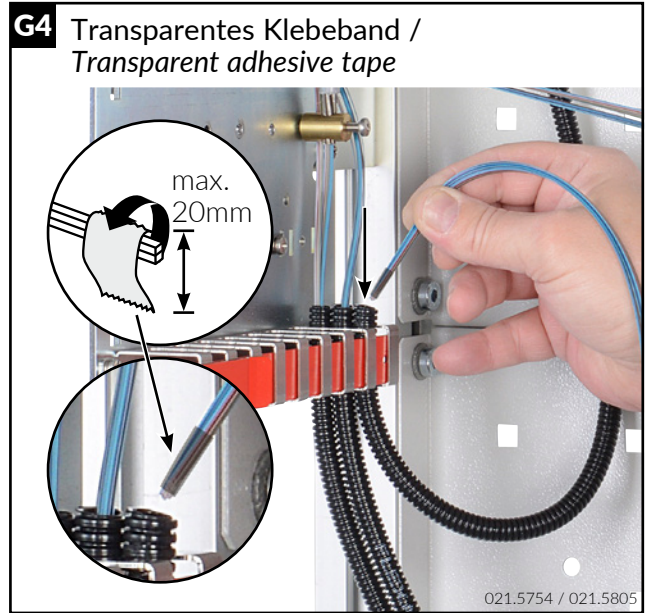
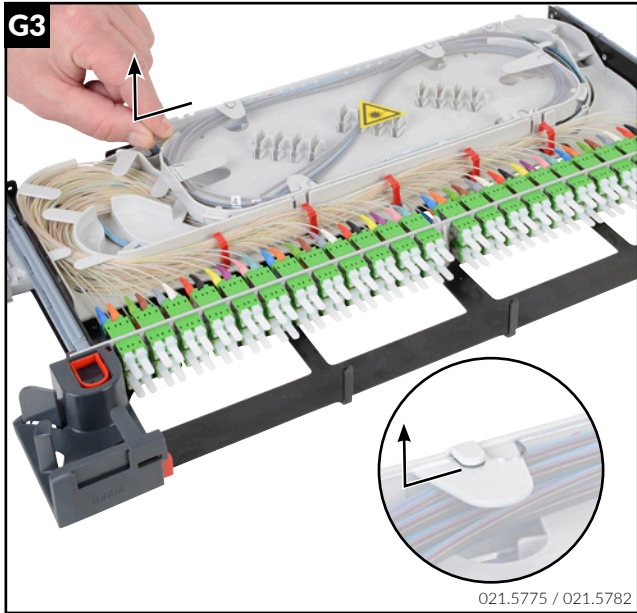
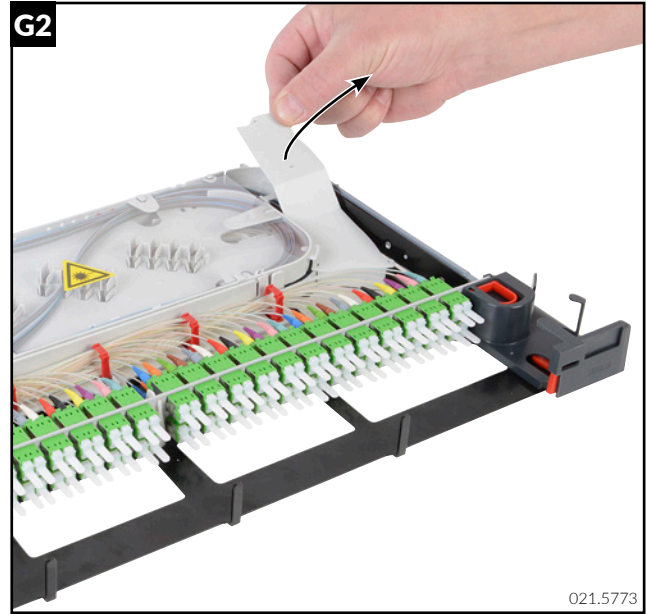
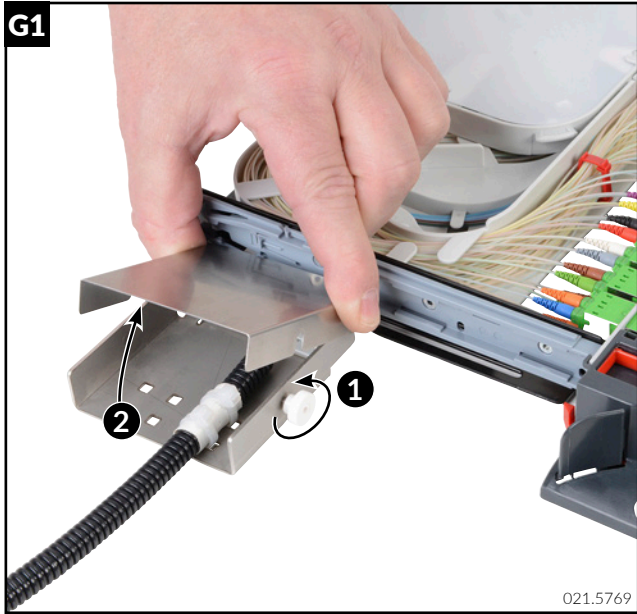
E - Vorbereitung PRIME RTU/RSU BA / Preparation PRIME RTU/RSU BA

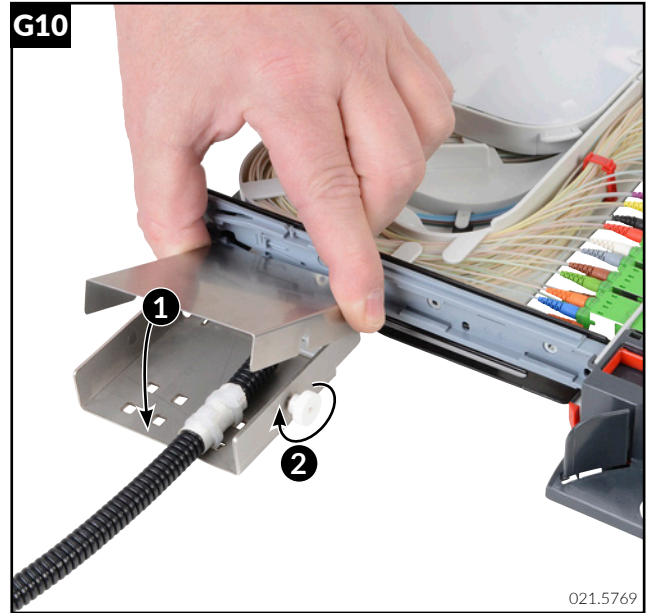
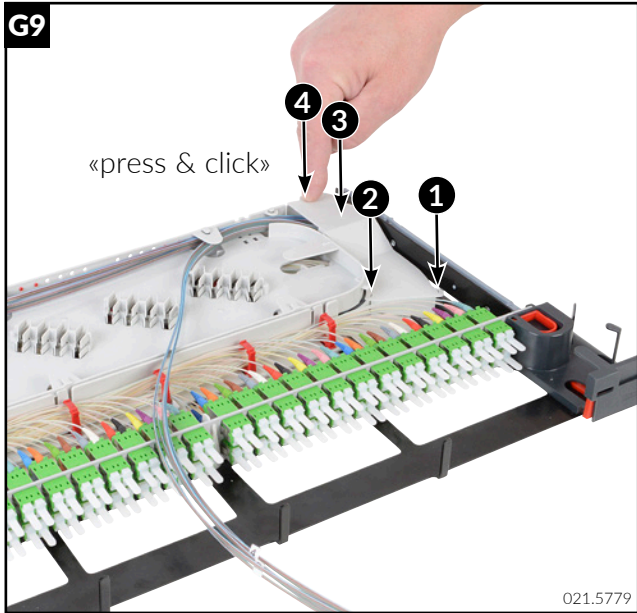
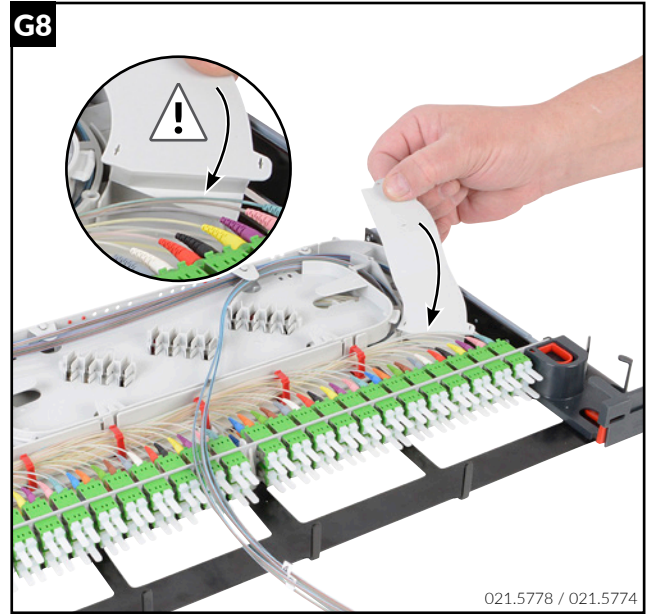
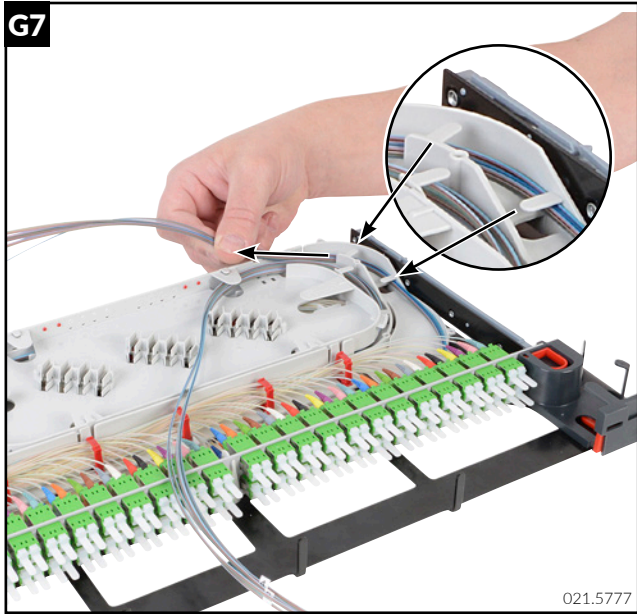


F - Faseraufteiler 24 x NW-7 / Fiber distribution 24 x NW-7



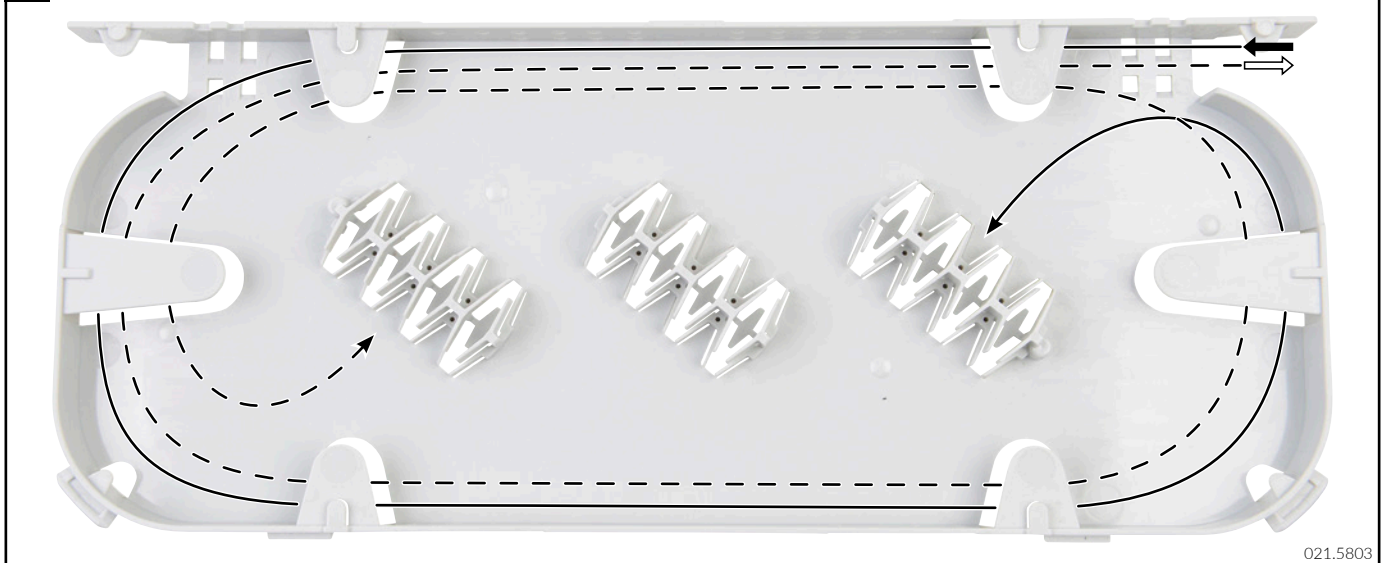
G - Fasereinführung / Fiber insertion





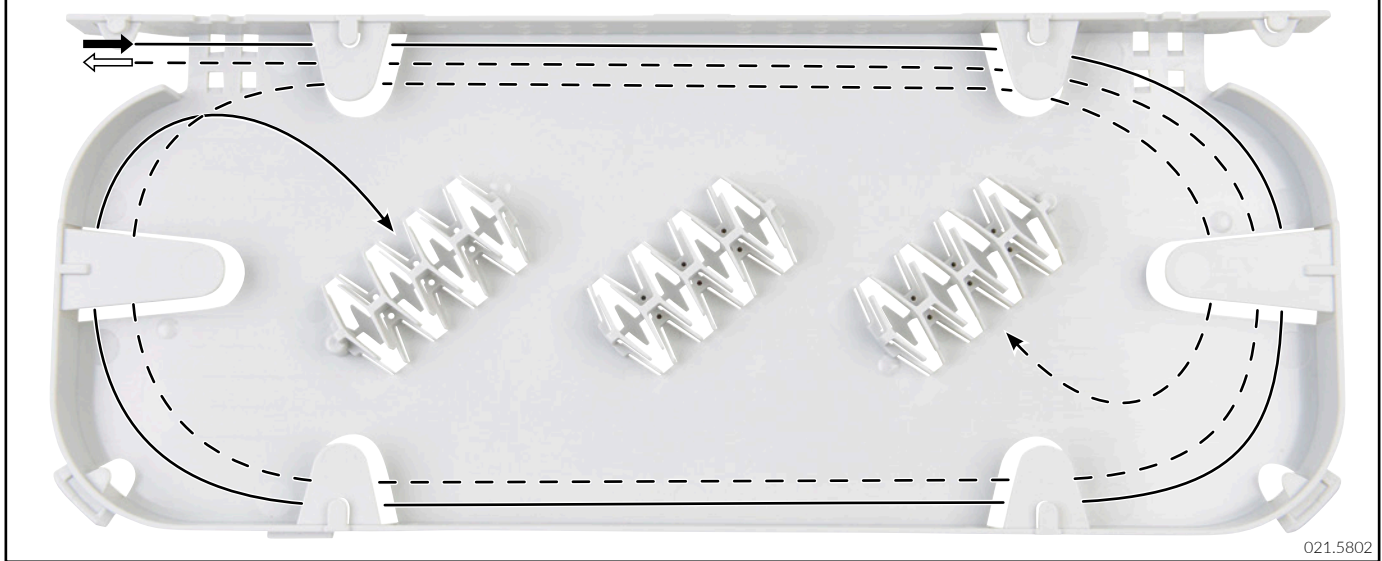
H - Ribbon Spleisskassette / Ribbon splice tray

H1 Faserführung RTU/RSU LE und BA / Fiber routing RTU/RSU LE and BA

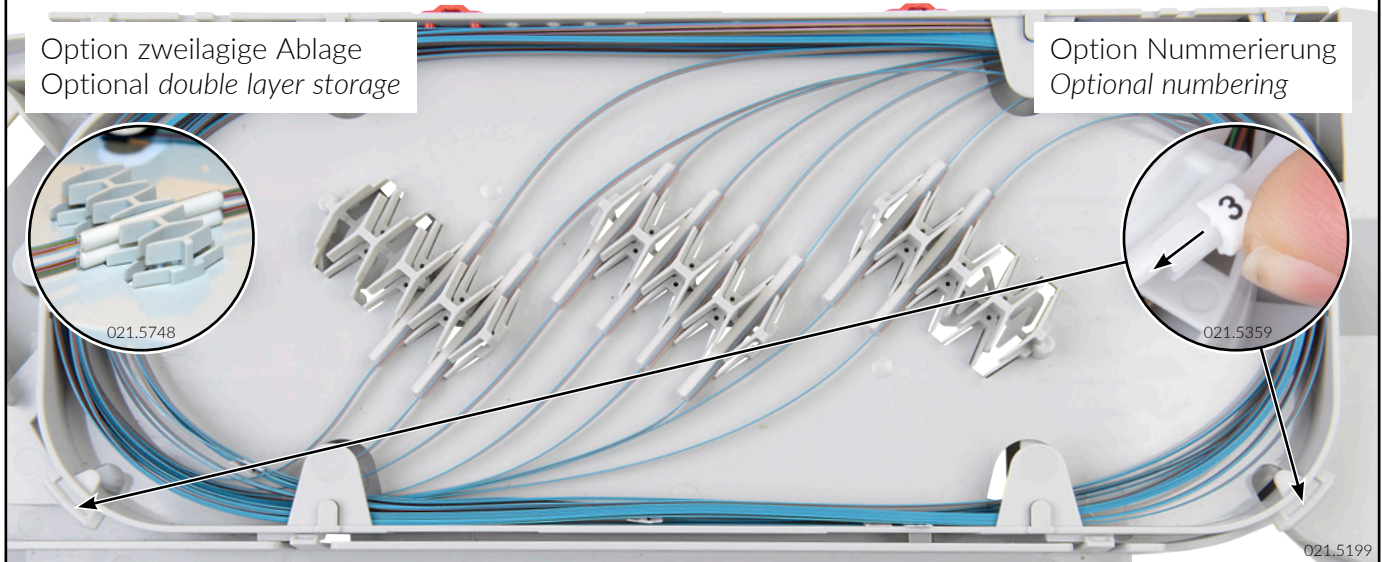




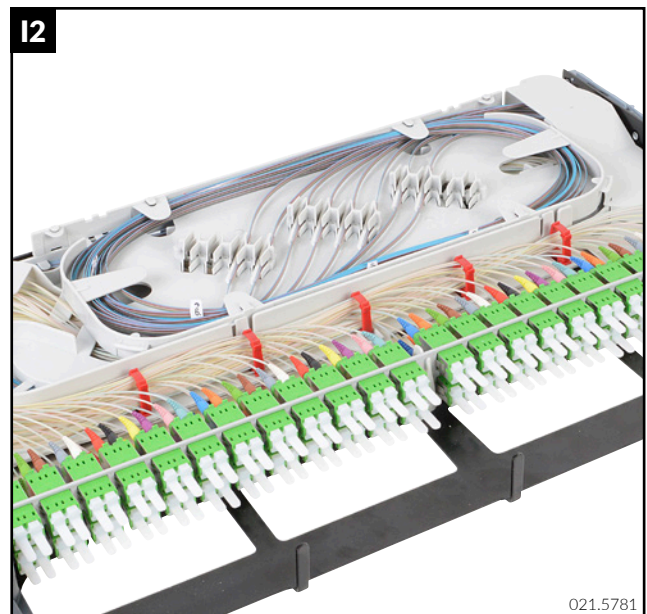
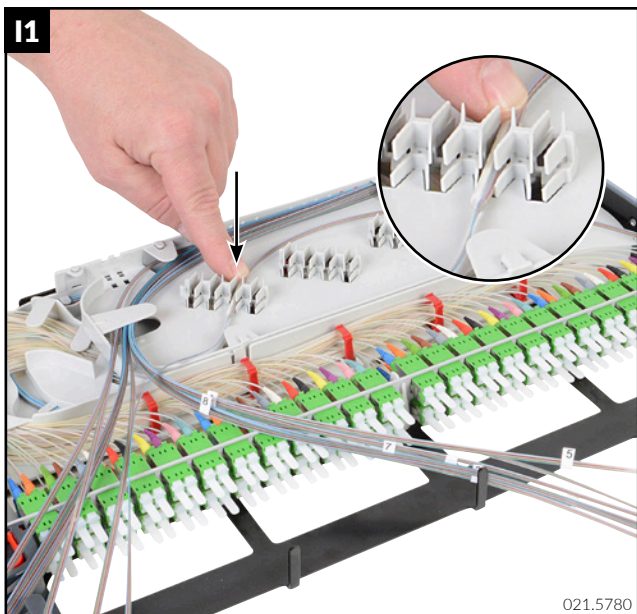
H2 Faserführung RTU/RSU RI / Fiber routing RTU/RSU RI



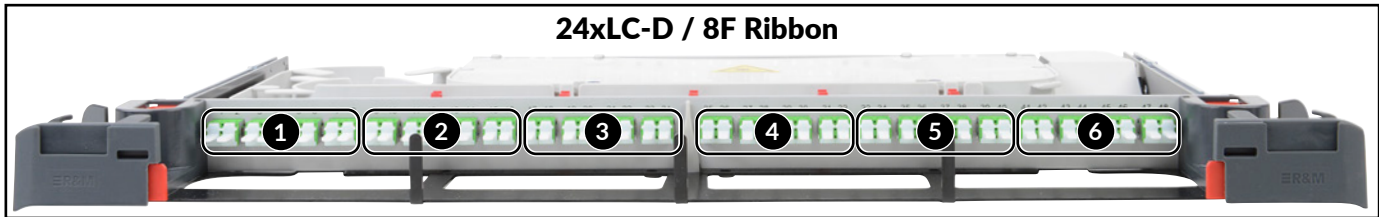
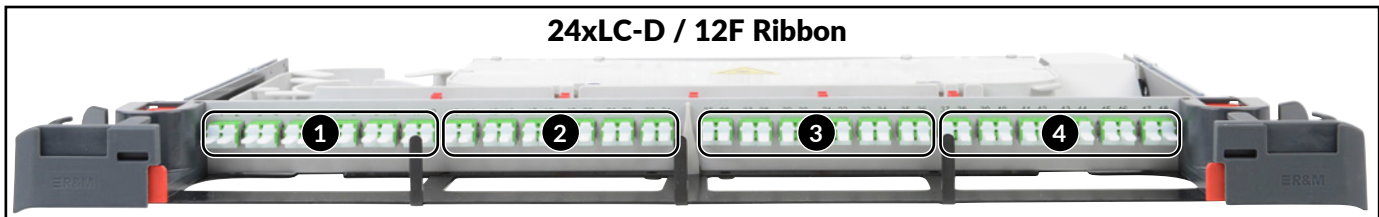
H3 Spleissablage / Splice storage



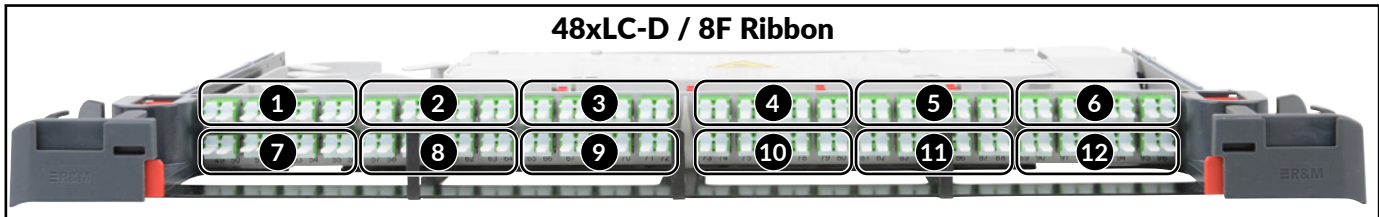
I - Spleissen / splicing



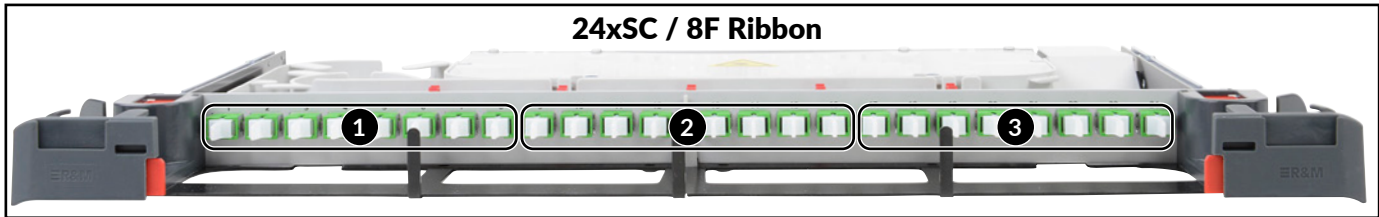
J - Nummerierung der Fan-Out / Numbering of the fanout



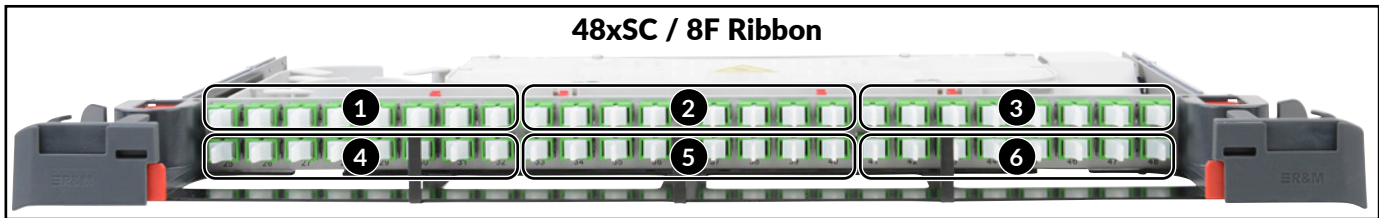
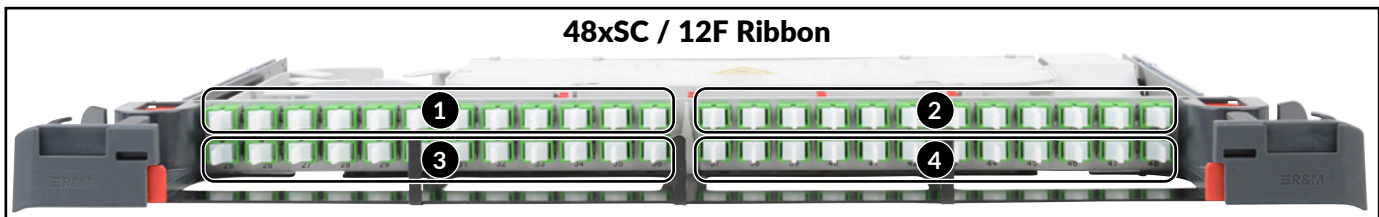
021.5795



021.5794



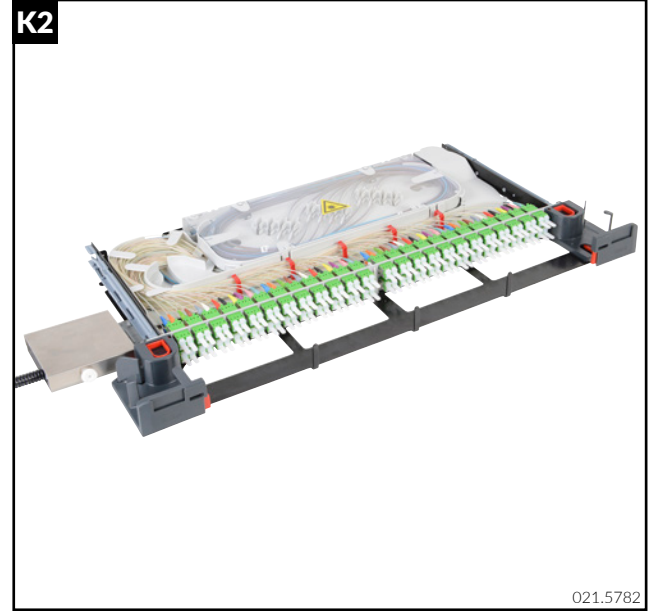
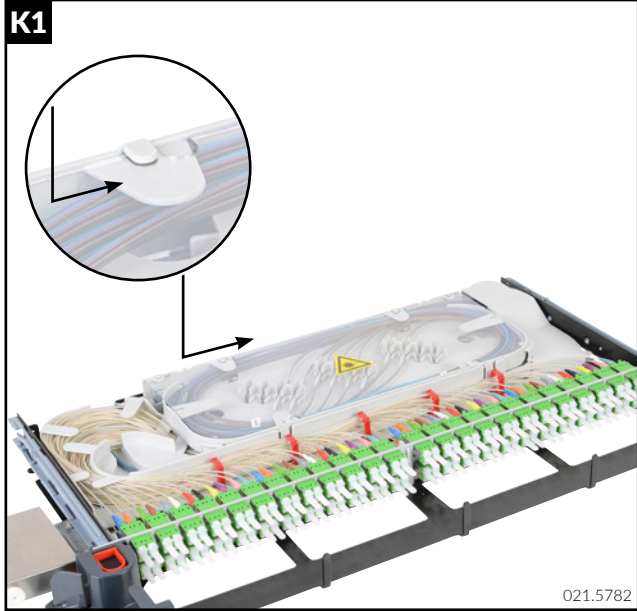
021.5797



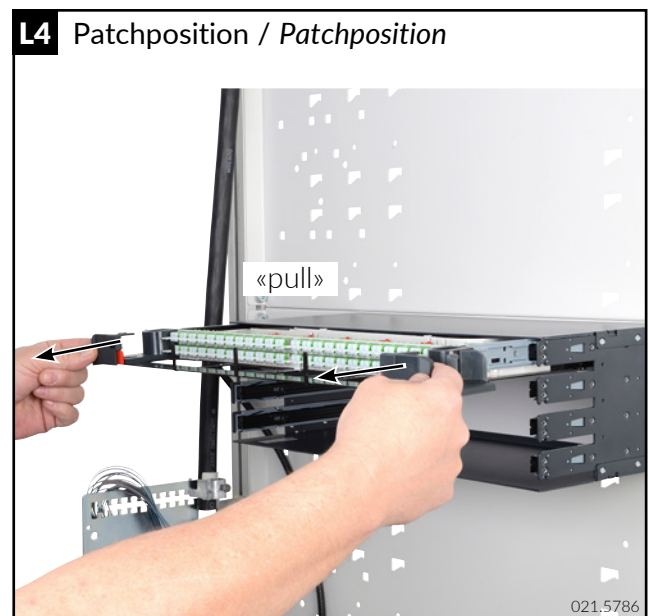
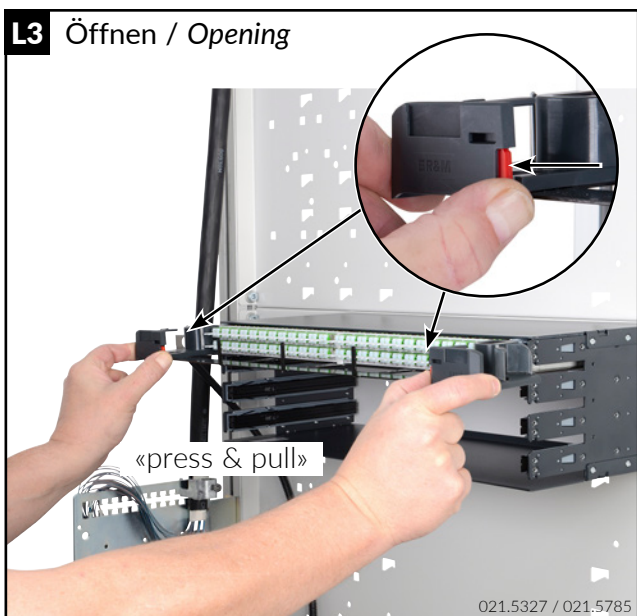
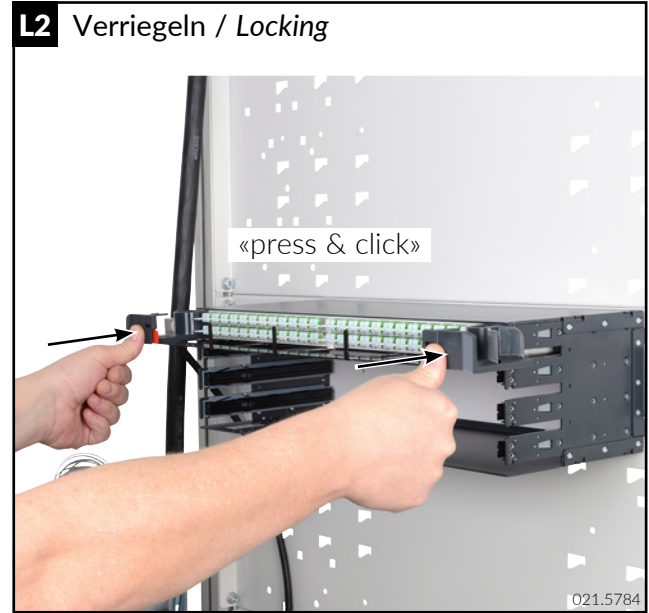
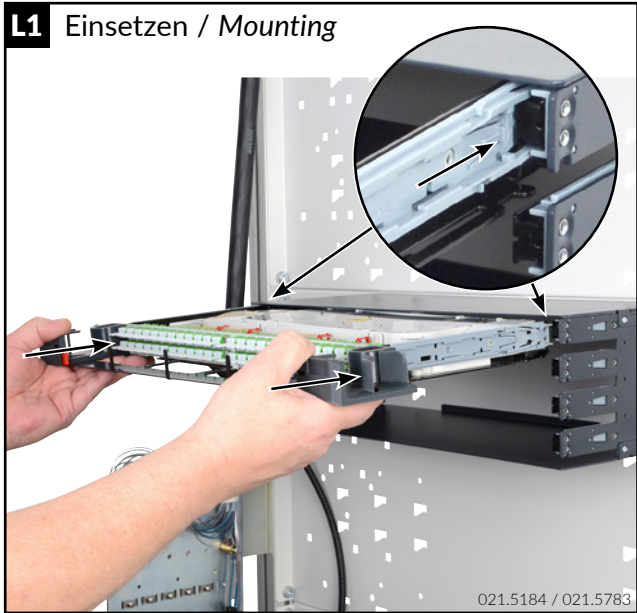
021.5796



K - Splisskassetendeckel schliessen / Close splice tray cover

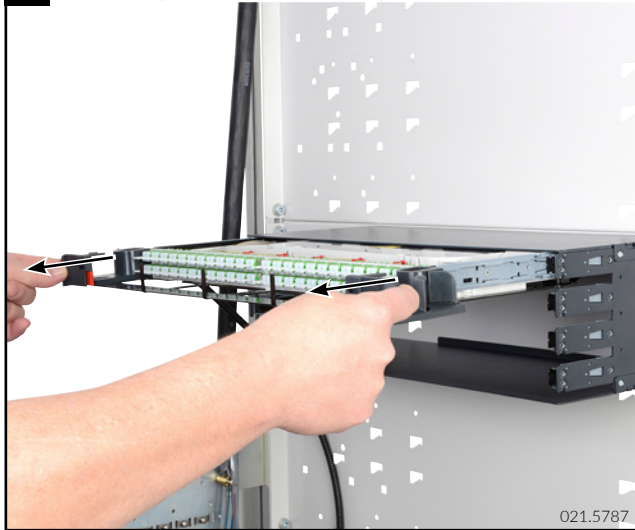


L - Bedienung / Operation



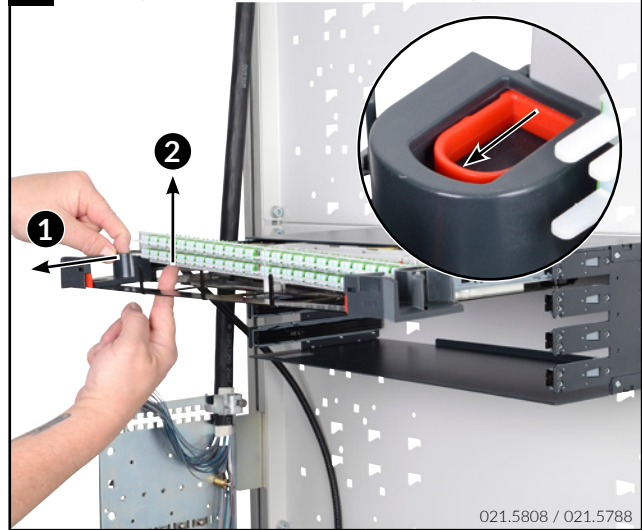


L5 Serviceposition / Serviceposition



021.5787

L6 Frontplatte anheben / Lift frontplate



021.5808 / 021.5788

L7 Spleissposition / Splice position



021.5789

L8 Entnehmen / Remove



021.5790 / 021.5807

M - Beschriftung / Labeling



021.5809

Headquarters

Switzerland

Reichle & De-Massari AG
Binzstrasse 32
CHE-8620 Wetzikon
Telephone HQ +41 (0)44 933 81 11
Telefax HQ +41 (0)44 930 49 41
E-Mail hq@rdm.com

www.rdm.com

R&M

868431/AV11.2019

Please note:

This guide shows the best practices for installation **ONLY**. R&M expressly disclaims all liability for any damage to material, equipment, and for any injury or death. Legal health and safety regulations should have priority over best practices as shown in this guide. R&M does not guarantee this guide to be free of errors. Products included may vary from products shown. Please exercise caution.

